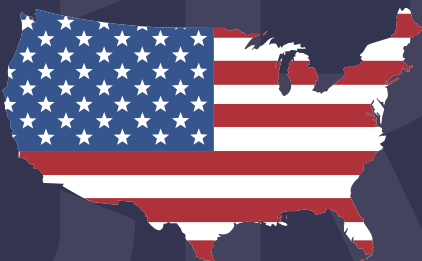


CRANE R-W-WT

www.bobspa.com



lift your life



bob unilift



lift your life

www.bobspa.com



For 45 years we have been producing equipment for the transport of materials developing a global know-how able to make us one of the reference companies at international level.



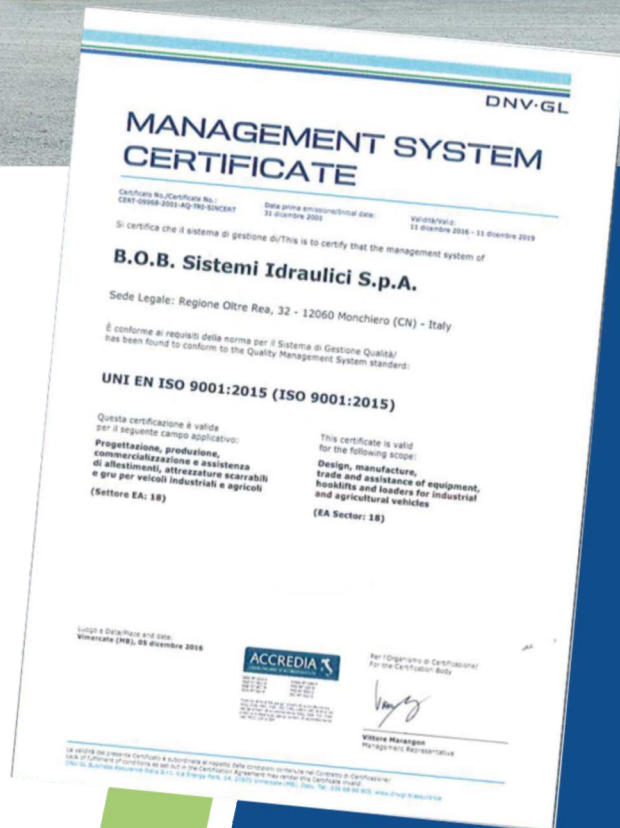
Da 45 anni produciamo attrezzature per il trasporto di materiali sviluppando un know how globale in grado di renderci una delle aziende di riferimento a livello internazionale.



Depuis 45 ans, nous produisons des équipements pour le transport de matériaux développant un savoir-faire mondial capable de faire de nous l'une des sociétés de référence au niveau international



Seit 45 Jahren produzieren wir Anlagen für den Transport von Materialien und entwickeln ein globales Know-how, das uns zu einem der Referenzunternehmen auf internationaler Ebene machen kann



index

R

R 110 MS1	4 - 5
R 110 MS2	6 - 7
R 110 S2S	8 - 9
R 110 S2L	10 - 11
R 110 S3S	12 - 13
R 110 S3L	14 - 15
R 130 MS1	16 - 17
R 130 MS2	18 - 19
R 130 S2S	20 - 21
R 130 S2L	22 - 23
R 130 S3S	24 - 25
R 130 S3L	26 - 27
R 150 MS1	28 - 29
R 150 MS2	30 - 31
R 150 S2S	32 - 33
R 150 S2L	34 - 35
R 150 S3S	36 - 37
R 150 S3L	38 - 39

W

W 110 S2	40 - 41
W 110 S3	42 - 43
W 130 S2	44 - 45
W 130 S3	46 - 47
W 150 S2	48 - 49
W 150 S3	50 - 51

WT

WT 110 MS1	52
WT 110 MS2	53
WT 130 MS1	54
WT 130 MS2	55

CRANE

R-W-WT

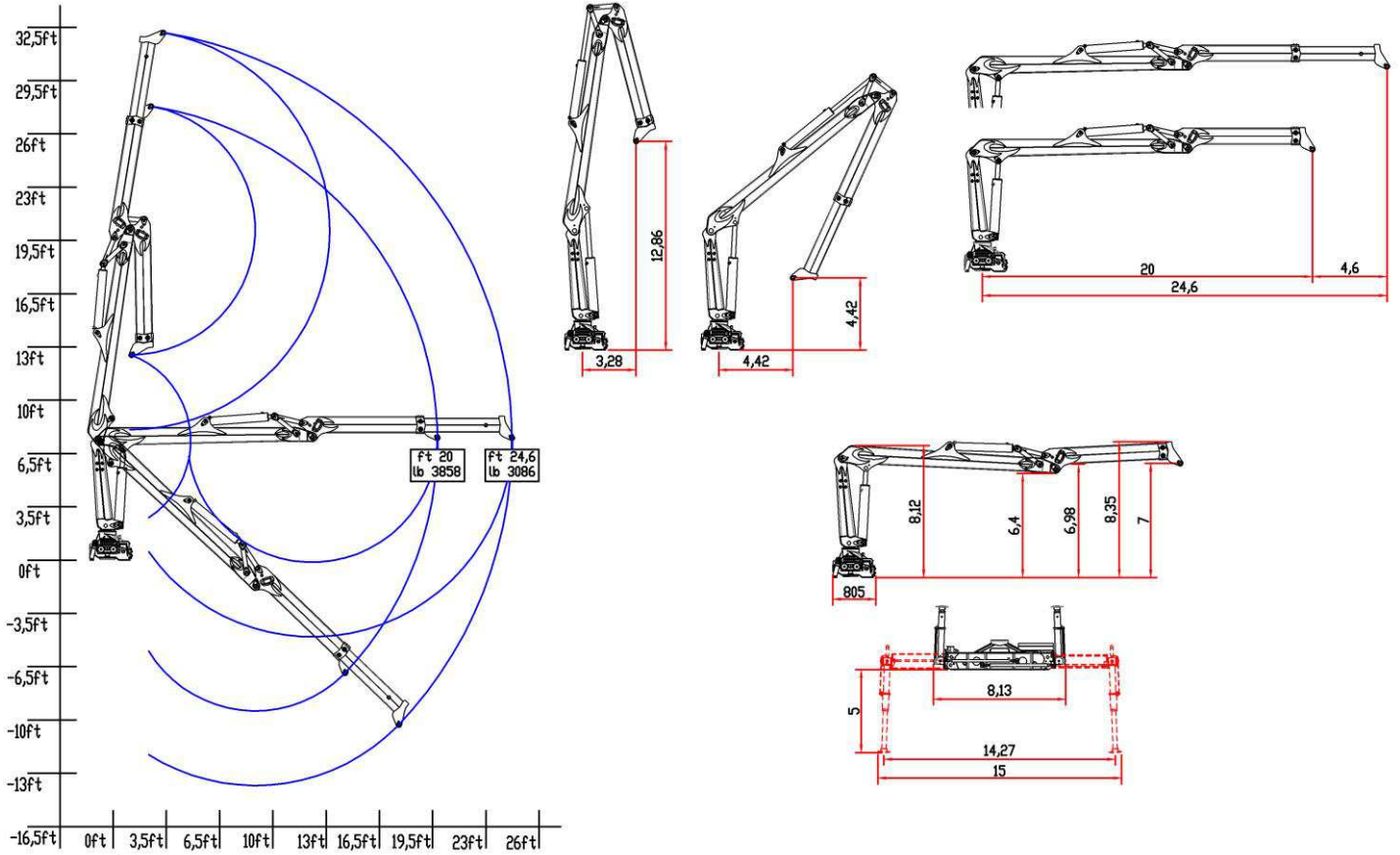
TECHNICAL SPECIFICATIONS

NOT FOLDABLE

- Class of calculation H1B4
 - Lifting moment = 81131 lbfft
 - Hydraulic outreach = 24,6 ft
 - First arm rigid type
 - Jib with one hydraulic extension with integrated fluid transmission system inside jib
 - Proportional flow control
 - Top seat laterally mounted controls with two additional functions at the jib extension
 - Stabilizers with hydraulic extension and descent
 - Stabilizers ground bilateral controls
 - Ground hoisting control
 - Crane rotation 425° with double rack
 - Construction to Machinery Directives 2006/42/CE+UNI EN 12.999
 - Basic crane weight*: 4828 lb
- * *The weight is indicative and referred to the basic crane without options or accessories, protection carters and ancillary equipments (grab, clamp, glass handling device)*

OPTIONS

- Stabilizers with hydraulic rotation 180°, extension and descent
- Stabilizers with pantograph descent
- Proportional electro-hydraulic flow control with SCANRECO radio control
- Lateral top seat control with joystick and pedals
- Man standing platform with crane operative restricted area
- Glass container handling device
- Oil cooling system
- Top seat access ladder
- Working lights (top seat and jib light)
- Hour counter
- Dry seat foldable shelter



bob unilift

R 110 M.S1



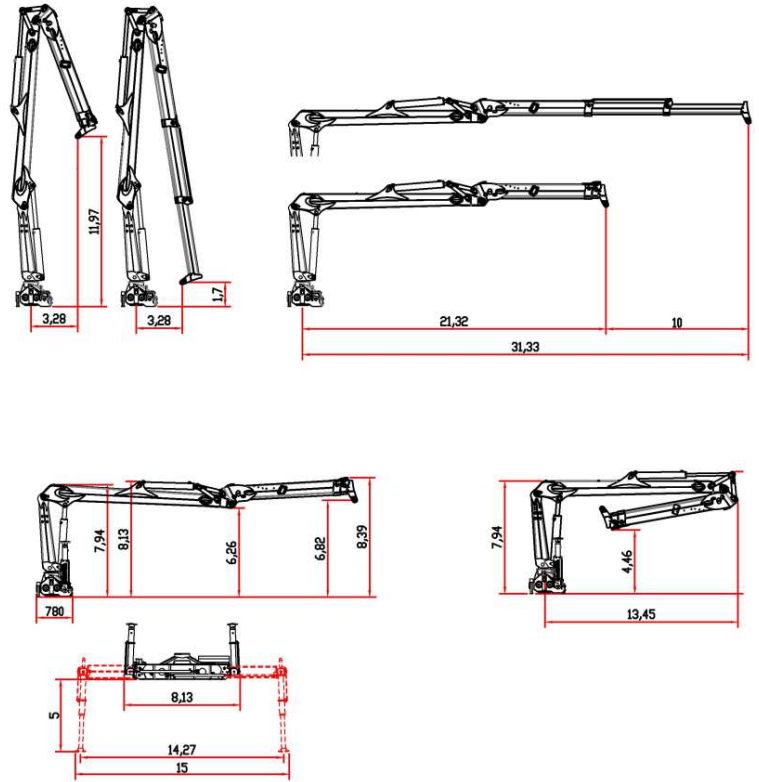
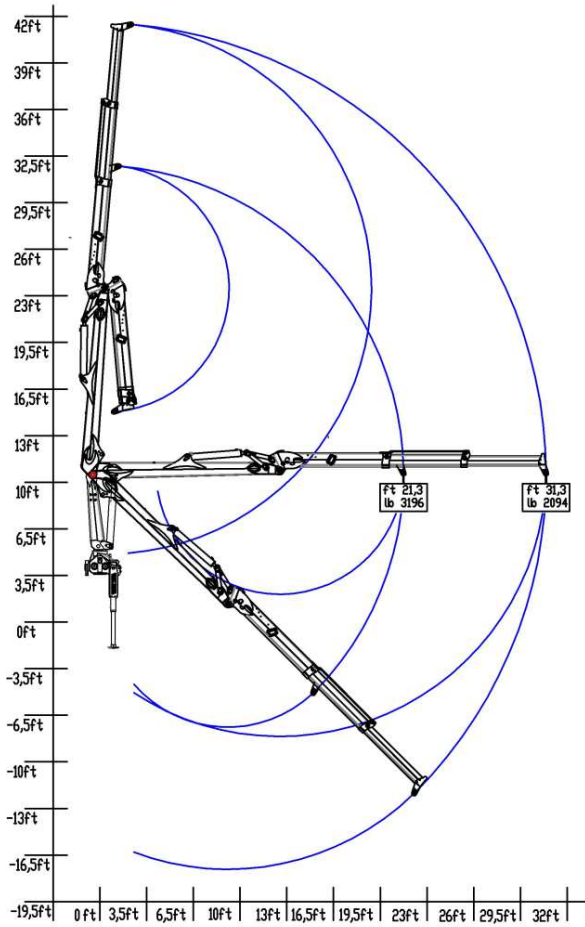
TECHNICAL SPECIFICATIONS

NOT FOLDABLE

- Class of calculation H1B4
 - Lifting moment = 81131 lbfft
 - Hydraulic outreach = 31,33 ft
 - First arm rigid type
 - Jib with two hydraulic extensions with integrated fluid transmission system inside jib
 - Proportional flow control
 - Top seat laterally mounted controls with two additional functions at the jib extension
 - Stabilizers with hydraulic extension and descent
 - Stabilizers ground bilateral controls
 - Ground hoisting control
 - Crane rotation 425° with double rack
 - Construction to Machinery Directives 2006/42/CE+UNI EN 12.999
 - Basic crane weight*: 5070 lb
- * *The weight is indicative and referred to the basic crane without options or accessories, protection carters and ancillary equipments (grab, clamp, glass handling device)*

OPTIONS

- Stabilizers with hydraulic rotation 180°, extension and descent
- Stabilizers with pantograph descent
- Proportional electro-hydraulic flow control with SCANRECO radio control
- Lateral top seat control with joystick and pedals
- Man standing platform with crane operative restricted area
- Glass container handling device
- Oil cooling system
- Top seat access ladder
- Working lights (top seat and jib light)
- Hour counter
- Dry seat foldable shelter



bob unilift

R 110 M.S2



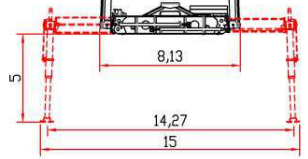
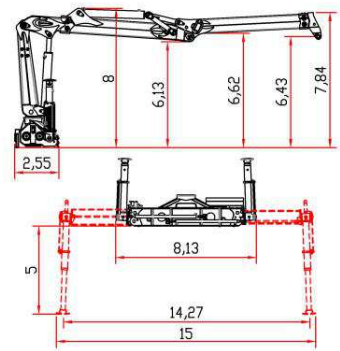
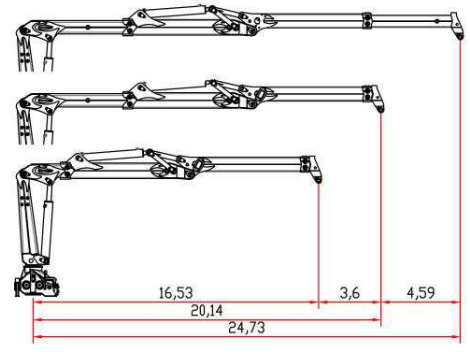
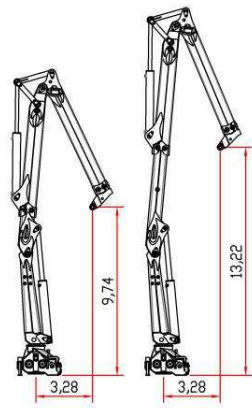
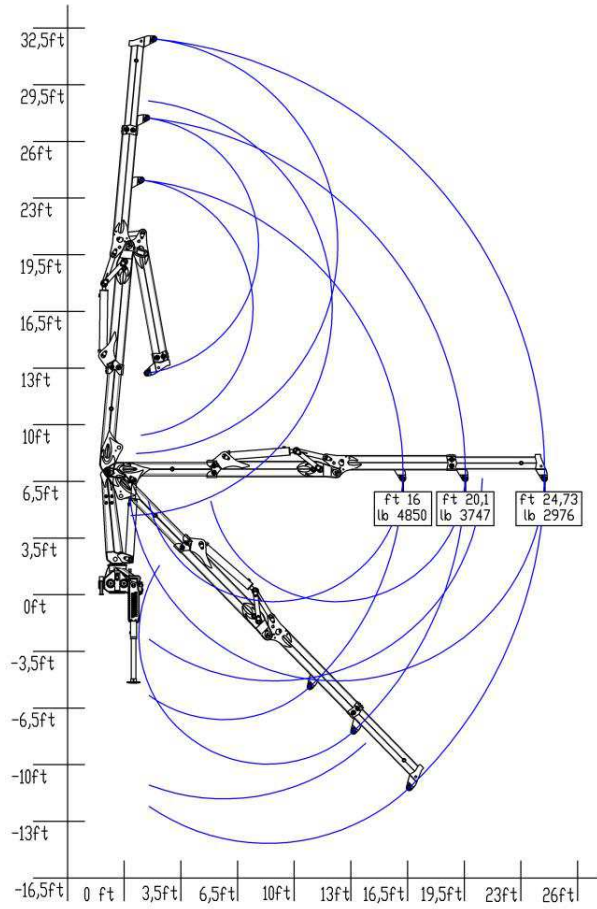
TECHNICAL SPECIFICATIONS

NOT FOLDABLE

- Class of calculation H1B4
 - Lifting moment = 81131 lbfft
 - Hydraulic outreach = 24,73 ft
 - First arm with hydraulic extension
 - Jib with one hydraulic extension with integrated fluid transmission system inside jib
 - Proportional flow control
 - Top seat laterally mounted controls with two additional functions at the jib extension
 - Stabilizers with hydraulic extension and descent
 - Stabilizers ground bilateral controls
 - Ground hoisting control
 - Crane rotation 425° with double rack
 - Construction to Machinery Directives 2006/42/CE+UNI EN 12.999
 - Basic crane weight*: 5291 lb
- * The weight is indicative and referred to the basic crane without options or accessories, protection carters and ancillary equipments (grab, clamp, glass handling device)*

OPTIONS

- Stabilizers with hydraulic rotation 180°, extension and descent
- Stabilizers with pantograph descent
- Proportional electro-hydraulic flow control with SCANRECO radio control
- Lateral top seat control with joystick and pedals
- Man standing platform with crane operative restricted area
- Glass container handling device
- Oil cooling system
- Top seat access ladder
- Working lights (top seat and jib light)
- Hour counter
- Dry seat foldable shelter



bob unilift

R 110 S2S



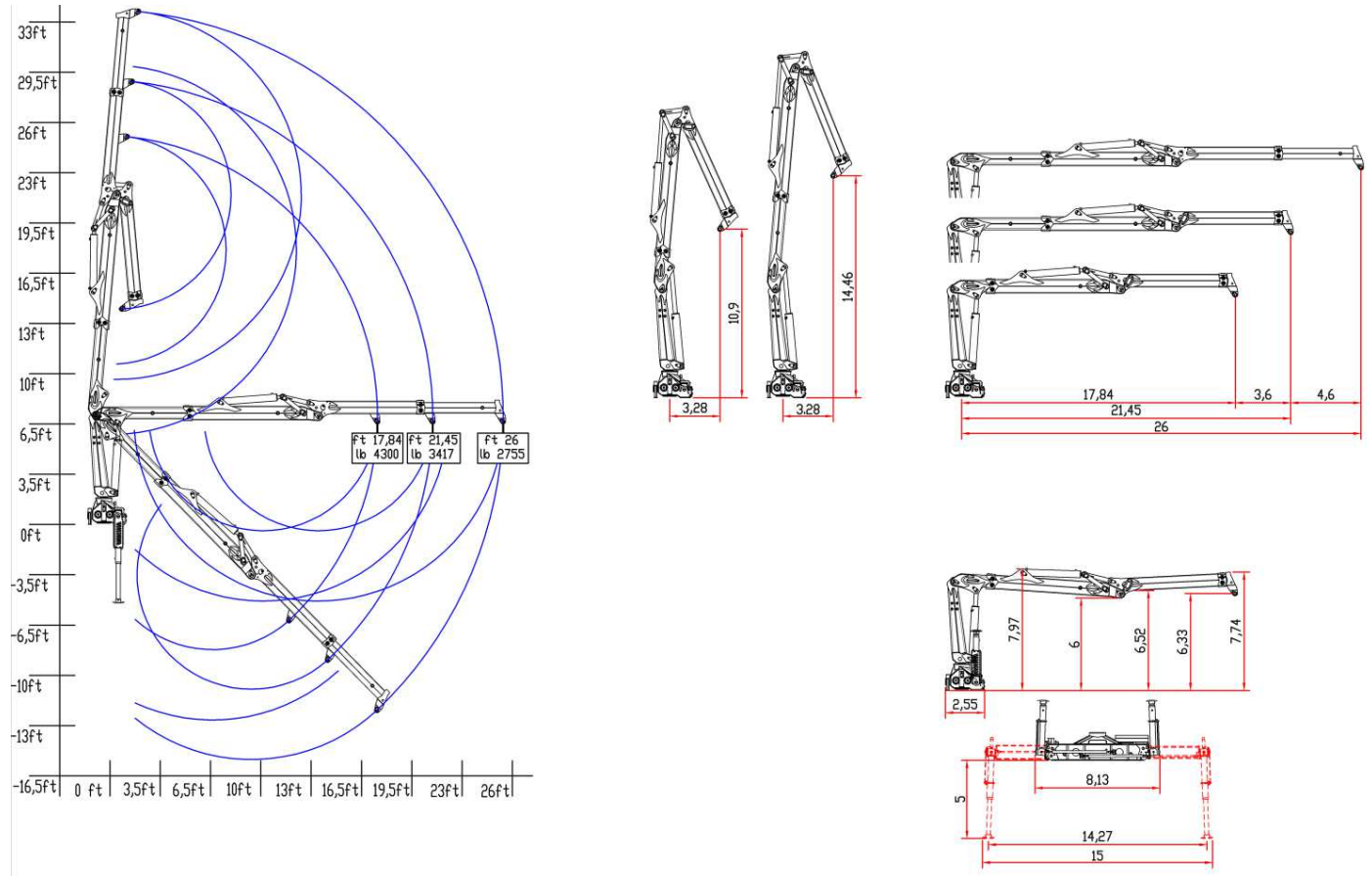
TECHNICAL SPECIFICATIONS

NOT FOLDABLE

- Class of calculation H1B4
 - Lifting moment = 81131 lbfft
 - Hydraulic outreach = 26 ft
 - First arm with hydraulic extension
 - Jib with one hydraulic extension with integrated fluid transmission system inside jib
 - Proportional flow control
 - Top seat laterally mounted controls with two additional functions at the jib extension
 - Stabilizers with hydraulic extension and descent
 - Stabilizers ground bilateral controls
 - Ground hoisting control
 - Crane rotation 425° with double rack
 - Construction to Machinery Directives 2006/42/CE+UNI EN 12.999
 - Basic crane weight*: 5357 lb
- * The weight is indicative and referred to the basic crane without options or accessories, protection carters and ancillary equipments (grab, clamp, glass handling device)*

OPTIONS

- Stabilizers with hydraulic rotation 180°, extension and descent
- Stabilizers with pantograph descent
- Proportional electro-hydraulic flow control with SCANRECO radio control
- Lateral top seat control with joystick and pedals
- Man standing platform with crane operative restricted area
- Glass container handling device
- Oil cooling system
- Top seat access ladder
- Working lights (top seat and jib light)
- Hour counter
- Dry seat foldable shelter



bob unilift

R 110 S2L



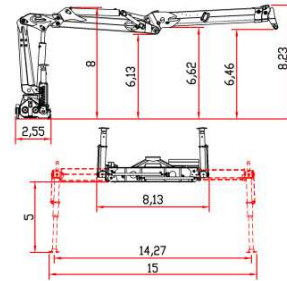
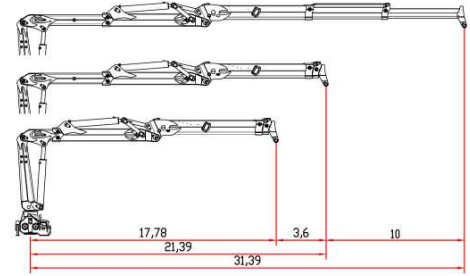
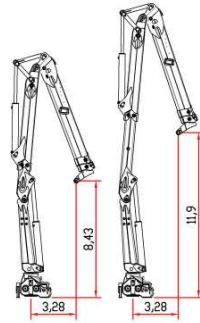
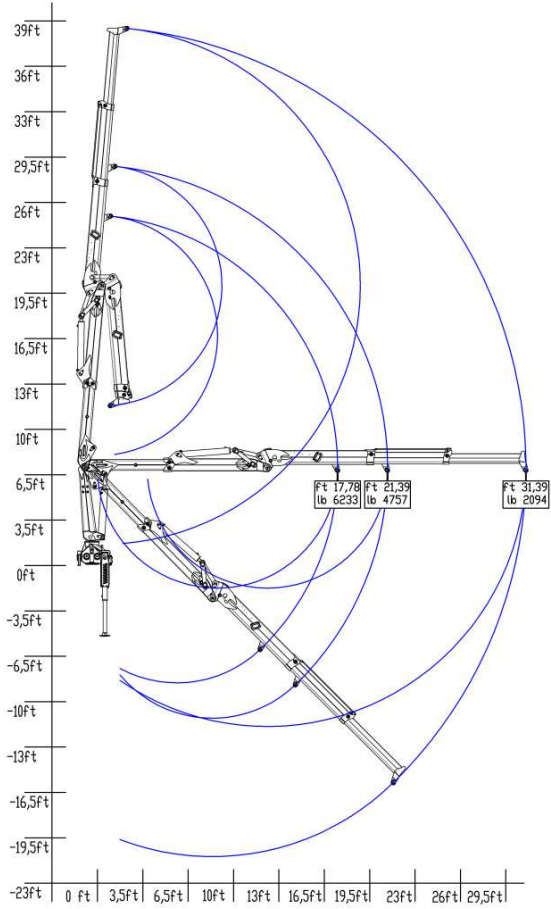
TECHNICAL SPECIFICATIONS

NOT FOLDABLE

- Class of calculation H1B4
 - Lifting moment = 81131 lbfft
 - Hydraulic outreach = 31,39 ft
 - First arm with hydraulic extension
 - Jib with two hydraulic extensions with integrated fluid transmission system inside jib
 - Proportional flow control
 - Top seat laterally mounted controls with two additional functions at the jib extension
 - Stabilizers with hydraulic extension and descent
 - Stabilizers ground bilateral controls
 - Ground hoisting control
 - Crane rotation 425° with double rack
 - Construction to Machinery Directives 2006/42/CE+UNI EN 12.999
 - Basic crane weight*: 5445 lb
- * The weight is indicative and referred to the basic crane without options or accessories, protection carters and ancillary equipments (grab, clamp, glass handling device)*

OPTIONS

- Stabilizers with hydraulic rotation 180°, extension and descent
- Stabilizers with pantograph descent
- Proportional electro-hydraulic flow control with SCANRECO radio control
- Lateral top seat control with joystick and pedals
- Man standing platform with crane operative restricted area
- Glass container handling device
- Oil cooling system
- Top seat access ladder
- Working lights (top seat and jib light)
- Hour counter
- Dry seat foldable shelter



R 110 S3S



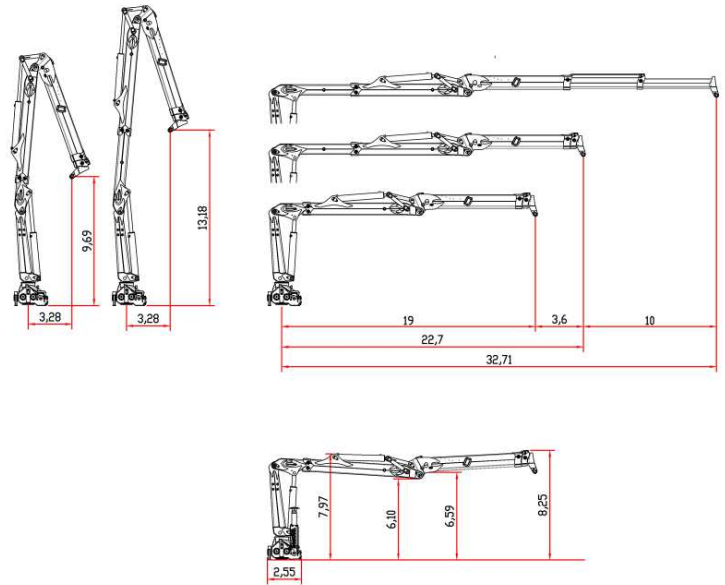
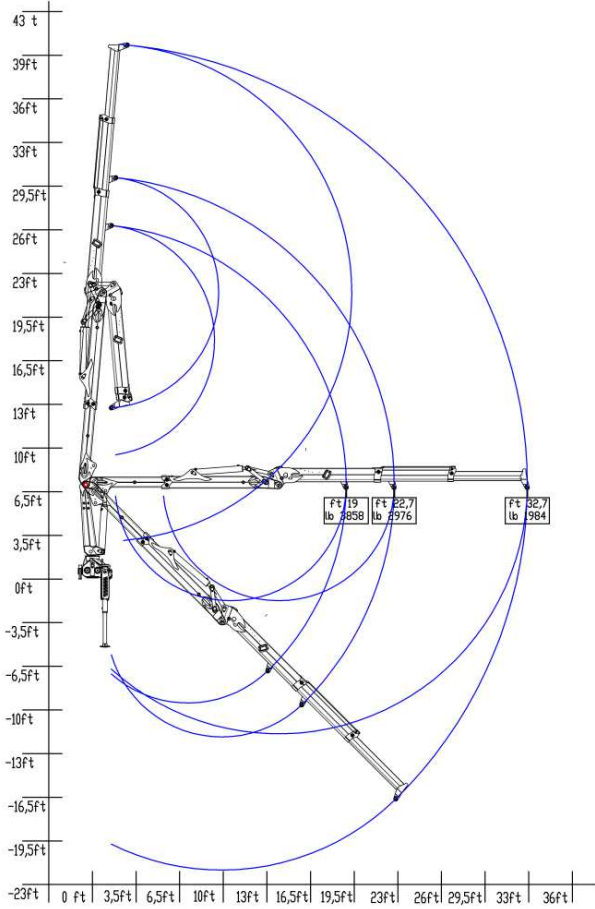
TECHNICAL SPECIFICATIONS

NOT FOLDABLE

- Class of calculation H1B4
 - Lifting moment = 81131 lbfft
 - Hydraulic outreach = 32,71 ft
 - First arm with hydraulic extension
 - Jib with two hydraulic extensions with integrated fluid transmission system inside jib
 - Proportional flow control
 - Top seat laterally mounted controls with two additional functions at the jib extension
 - Stabilizers with hydraulic extension and descent
 - Stabilizers ground bilateral controls
 - Ground hoisting control
 - Crane rotation 425° with double rack
 - Construction to Machinery Directives 2006/42/CE+UNI EN 12.999
 - Basic crane weight*: 5500 lb
- * The weight is indicative and referred to the basic crane without options or accessories, protection carters and ancillary equipments (grab, clamp, glass handling device)*

OPTIONS

- Stabilizers with hydraulic rotation 180°, extension and descent
- Stabilizers with pantograph descent
- Proportional electro-hydraulic flow control with SCANRECO radio control
- Lateral top seat control with joystick and pedals
- Man standing platform with crane operative restricted area
- Glass container handling device
- Oil cooling system
- Top seat access ladder
- Working lights (top seat and jib light)
- Hour counter
- Dry seat foldable shelter



R 110 S3



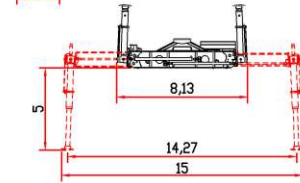
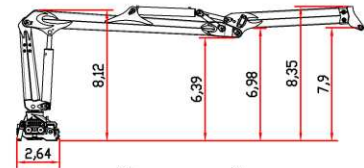
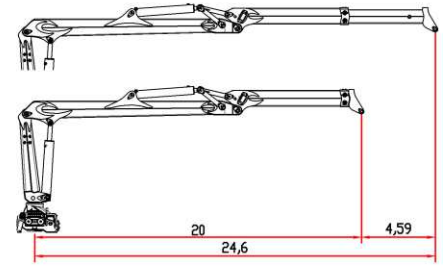
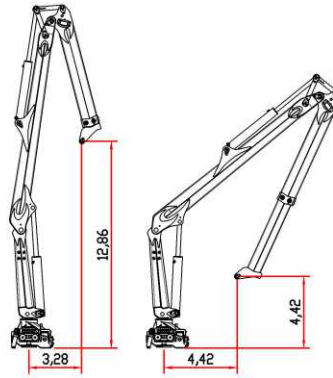
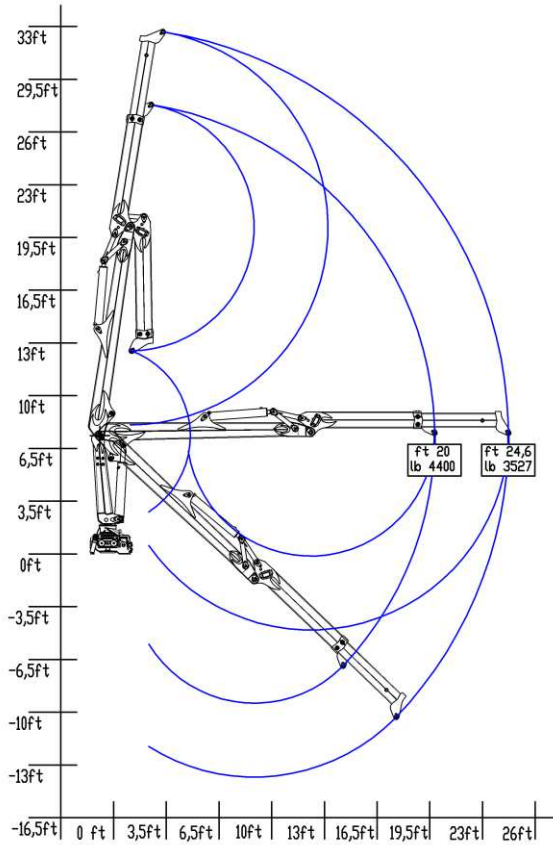
TECHNICAL SPECIFICATIONS

NOT FOLDABLE

- Class of calculation H1B4
 - Lifting moment = 95883 lbfft
 - Hydraulic outreach = 24,6 ft
 - First arm rigid type
 - Jib with one hydraulic extension with integrated fluid transmission system inside jib
 - Proportional flow control
 - Top seat laterally mounted controls with two additional functions at the jib extension
 - Stabilizers with hydraulic rotation 180°, extension and descent
 - Stabilizers ground bilateral controls
 - Ground hoisting control
 - Crane rotation 425° with double rack
 - Construction to Machinery Directives 2006/42/CE+UNI EN 12.999
 - Basic crane weight *: 4828 lb
- * The weight is indicative and referred to the basic crane without options or accessories, protection carters and ancillary equipments (grab, clamp, glass handling device)*

OPTIONS

- Stabilizers with pantograph descent
- Proportional electro-hydraulic flow control with SCANRECO radio control
- Lateral top seat control with joystick and pedals
- Man standing platform with crane operative restricted area
- Glass container handling device
- Oil cooling system
- Top seat access ladder
- Working lights (top seat and jib light)
- Hour counter
- Dry seat foldable shelter



R 130 M, S1



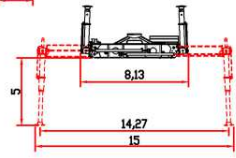
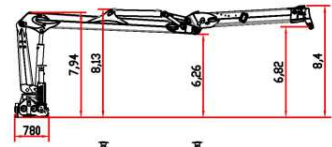
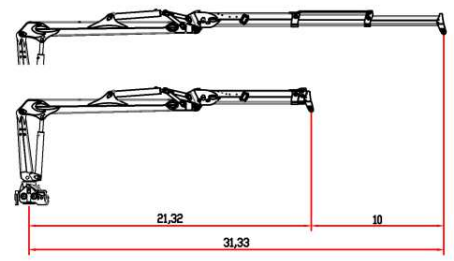
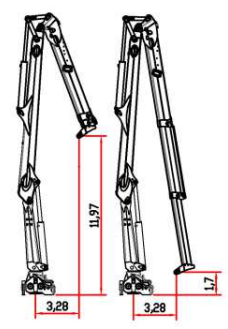
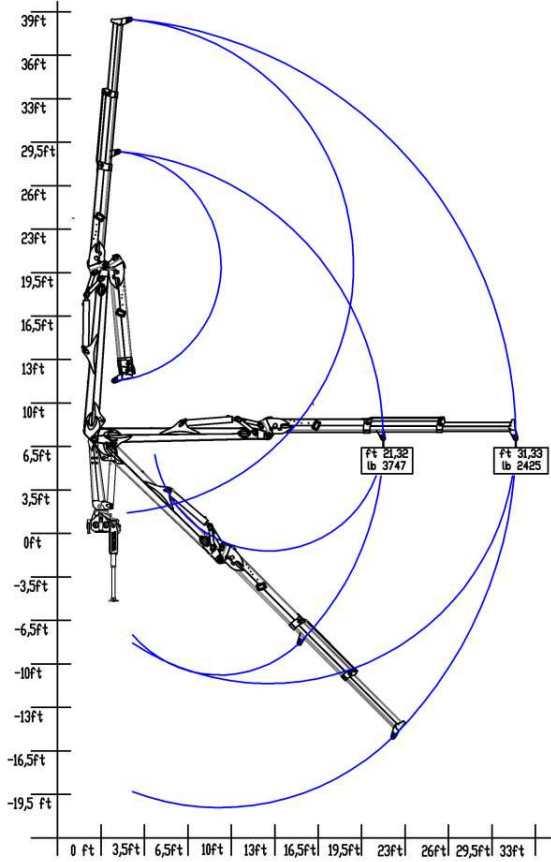
TECHNICAL SPECIFICATIONS

NOT FOLDABLE

- Class of calculation H1B4
 - Lifting moment = 95883 lbfft
 - Hydraulic outreach = 31,33 ft
 - First arm rigid type
 - Jib with two hydraulic extensions with integrated fluid transmission system inside jib
 - Proportional flow control
 - Top seat laterally mounted controls with two additional functions at the jib extension
 - Stabilizers with hydraulic rotation 180°, extension and descent
 - Stabilizers ground bilateral controls
 - Ground hoisting control
 - Crane rotation 425° with double rack
 - Construction to Machinery Directives 2006/42/CE+UNI EN 12.999
 - Basic crane weight *: 5070 lb
- * The weight is indicative and referred to the basic crane without options or accessories, protection carters and ancillary equipments (grab, clamp, glass handling device)*

OPTIONS

- Stabilizers with pantograph descent
- Proportional electro-hydraulic flow control with SCANRECO radio control
- Lateral top seat control with joystick and pedals
- Man standing platform with crane operative restricted area
- Glass container handling device
- Oil cooling system
- Top seat access ladder
- Working lights (top seat and jib light)
- Hour counter
- Dry seat foldable shelter



R 130 MS2



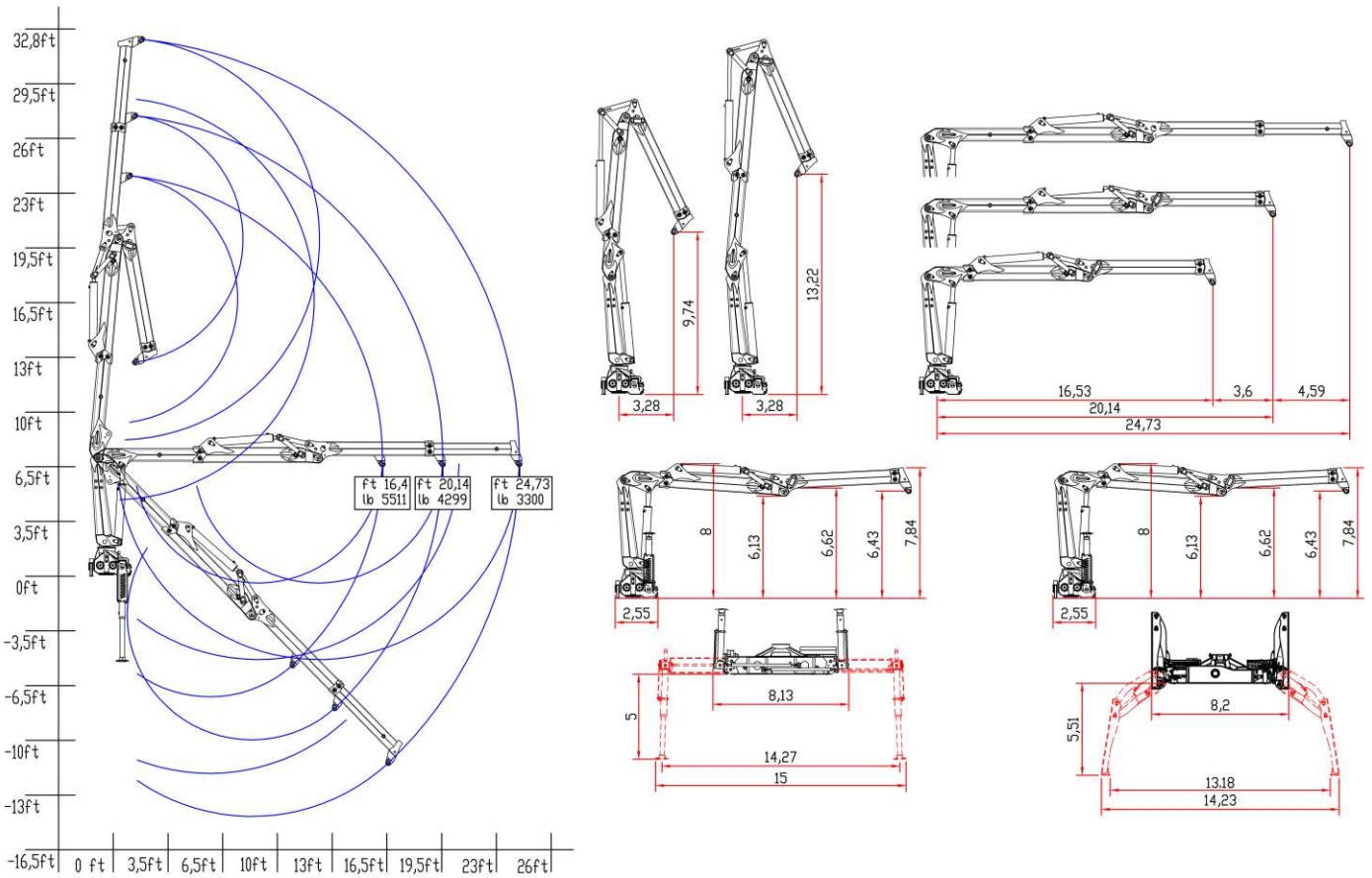
TECHNICAL SPECIFICATIONS

NOT FOLDABLE

- Class of calculation H1B4
 - Lifting moment = 95883 lbfft
 - Hydraulic outreach = 24,73 ft
 - First arm with hydraulic extension
 - Jib with one hydraulic extension with integrated fluid transmission system inside jib
 - Proportional flow control
 - Top seat laterally mounted controls with two additional functions at the jib extension
 - Stabilizers with hydraulic rotation 180°, extension and descent
 - Stabilizers ground bilateral controls
 - Ground hoisting control
 - Crane rotation 425° with double rack
 - Construction to Machinery Directives 2006/42/CE+UNI EN 12.999
 - Basic crane weight *: 5357 lb
- * The weight is indicative and referred to the basic crane without options or accessories, protection carters and ancillary equipments (grab, clamp, glass handling device)*

OPTIONS

- Stabilizers with pantograph descent
- Proportional electro-hydraulic flow control with SCANRECO radio control
- Lateral top seat control with joystick and pedals
- Man standing platform with crane operative restricted area
- Glass container handling device
- Oil cooling system
- Top seat access ladder
- Working lights (top seat and jib light)
- Hour counter
- Dry seat foldable shelter



R 130 S2S



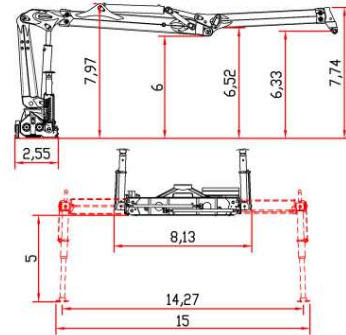
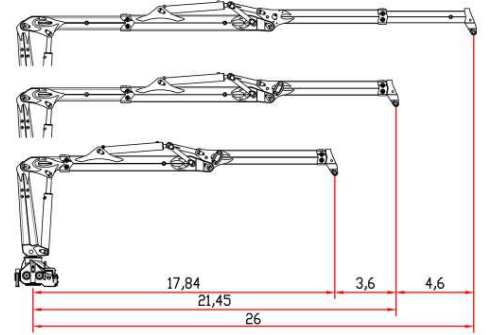
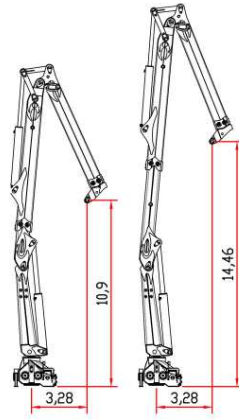
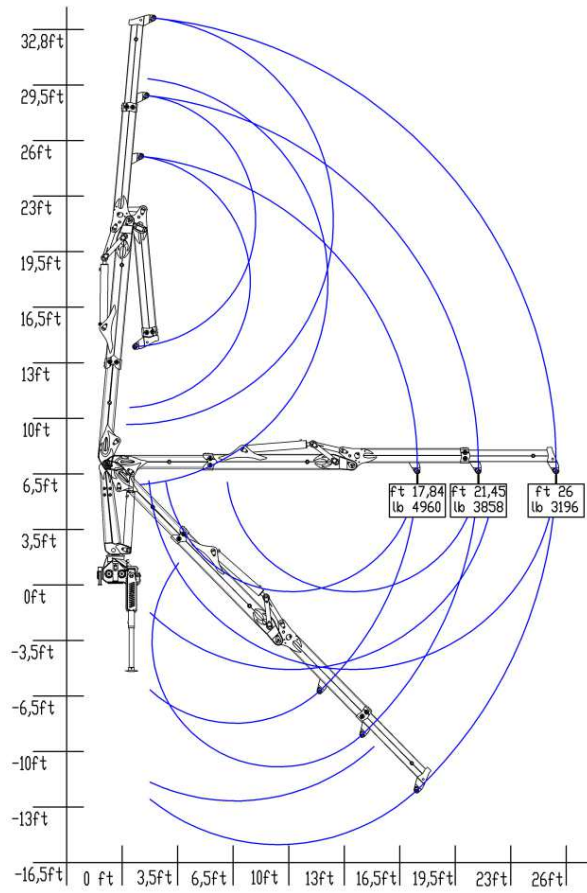
TECHNICAL SPECIFICATIONS

NOT FOLDABLE

- Class of calculation H1B4
 - Lifting moment = 95883 lbfft
 - Hydraulic outreach = 26 ft
 - First arm with hydraulic extension
 - Jib with one hydraulic extension with integrated fluid transmission system inside jib
 - Proportional flow control
 - Top seat laterally mounted controls with two additional functions at the jib extension
 - Stabilizers with hydraulic rotation 180°, extension and descent
 - Stabilizers ground bilateral controls
 - Ground hoisting control
 - Crane rotation 425° with double rack
 - Construction to Machinery Directives 2006/42/CE+UNI EN 12.999
 - Basic crane weight *: 5423 lb
- * The weight is indicative and referred to the basic crane without options or accessories, protection carters and ancillary equipments (grab, clamp, glass handling device)*

OPTIONS

- Stabilizers with pantograph descent
- Proportional electro-hydraulic flow control with SCANRECO radio control
- Lateral top seat control with joystick and pedals
- Man standing platform with crane operative restricted area
- Glass container handling device
- Oil cooling system
- Top seat access ladder
- Working lights (top seat and jib light)
- Hour counter
- Dry seat foldable shelter



R 130 S2



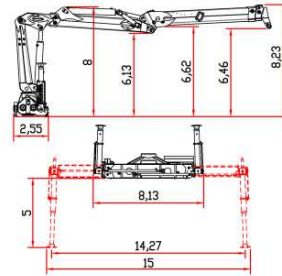
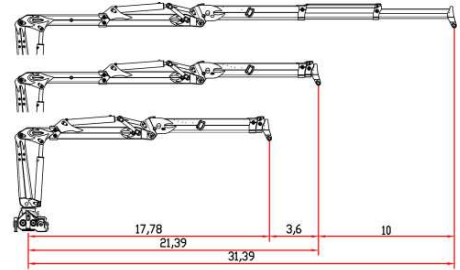
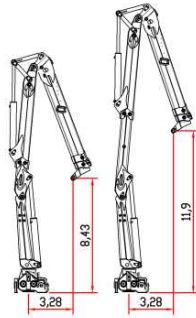
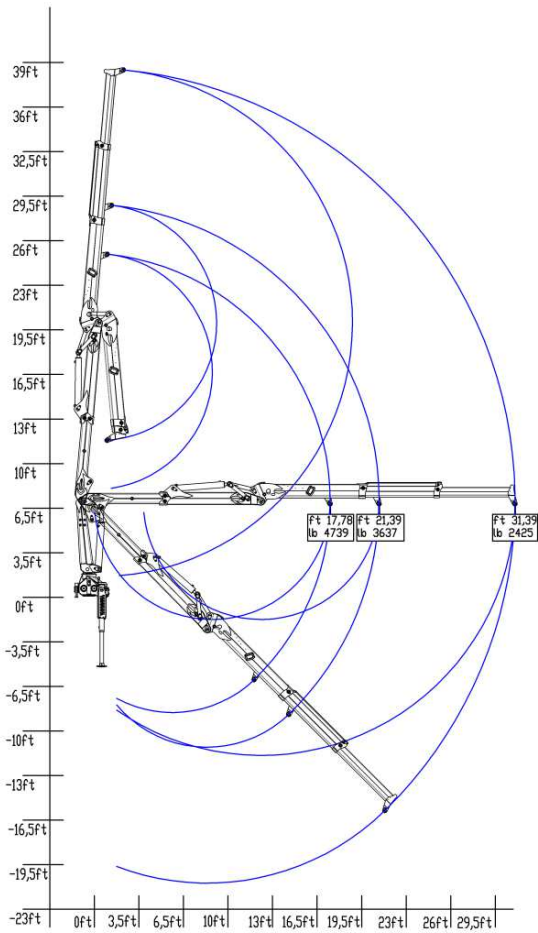
TECHNICAL SPECIFICATIONS

NOT FOLDABLE

- Class of calculation H1B4
 - Lifting moment = 95883 lbfft
 - Hydraulic outreach = 31,39 ft
 - First arm with hydraulic extension
 - Jib with two hydraulic extensions with integrated fluid transmission system inside jib
 - Proportional flow control
 - Top seat laterally mounted controls with two additional functions at the jib extension
 - Stabilizers with hydraulic rotation 180°, extension and descent
 - Stabilizers ground bilateral controls
 - Ground hoisting control
 - Crane rotation 425° with double rack
 - Construction to Machinery Directives 2006/42/CE+UNI EN 12.999
 - Basic crane weight *: 5511 lb
- * The weight is indicative and referred to the basic crane without options or accessories, protection carters and ancillary equipments (grab, clamp, glass handling device)*

OPTIONS

- Stabilizers with pantograph descent
- Proportional electro-hydraulic flow control with SCANRECO radio control
- Lateral top seat control with joystick and pedals
- Man standing platform with crane operative restricted area
- Glass container handling device
- Oil cooling system
- Top seat access ladder
- Working lights (top seat and jib light)
- Hour counter
- Dry seat foldable shelter



R 130 S3S



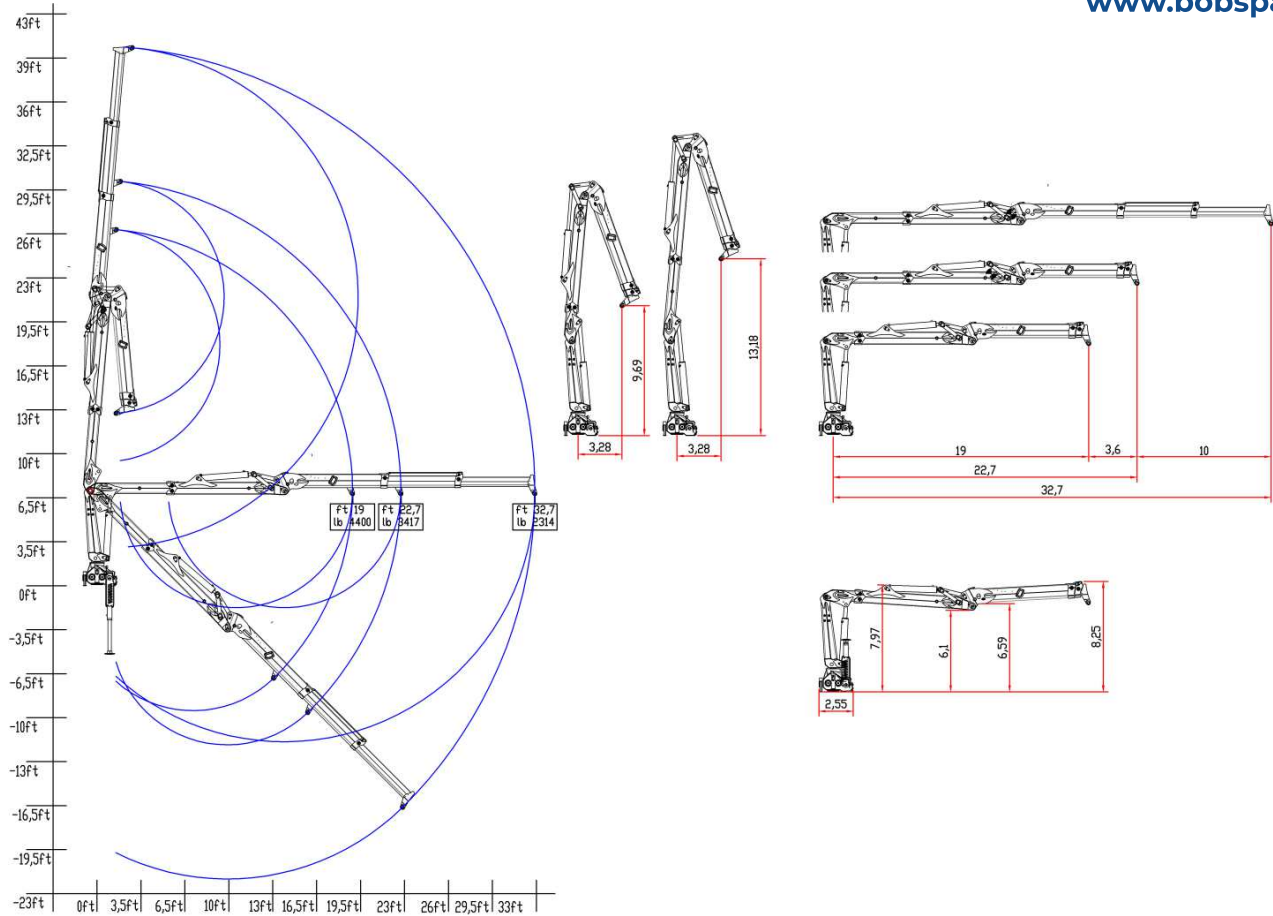
TECHNICAL SPECIFICATIONS

NOT FOLDABLE

- Class of calculation H1B4
 - Lifting moment = 95883 lbfft
 - Hydraulic outreach = 32,7 ft
 - First arm with hydraulic extension
 - Jib with two hydraulic extensions with integrated fluid transmission system inside jib
 - Proportional flow control
 - Top seat laterally mounted controls with two additional functions at the jib extension
 - Stabilizers with hydraulic rotation 180°, extension and descent
 - Stabilizers ground bilateral controls
 - Ground hoisting control
 - Crane rotation 425° with double rack
 - Construction to Machinery Directives 2006/42/CE+UNI EN 12.999
 - Basic crane weight *: 5577 lb
- * The weight is indicative and referred to the basic crane without options or accessories, protection carters and ancillary equipments (grab, clamp, glass handling device)*

OPTIONS

- Stabilizers with pantograph descent
- Proportional electro-hydraulic flow control with SCANRECO radio control
- Lateral top seat control with joystick and pedals
- Man standing platform with crane operative restricted area
- Glass container handling device
- Oil cooling system
- Top seat access ladder
- Working lights (top seat and jib light)
- Hour counter
- Dry seat foldable shelter



R 130 S3I



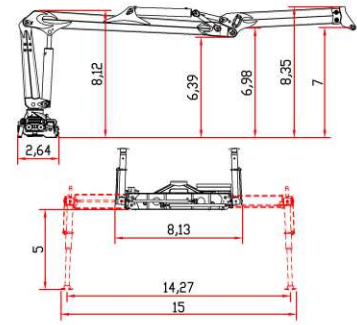
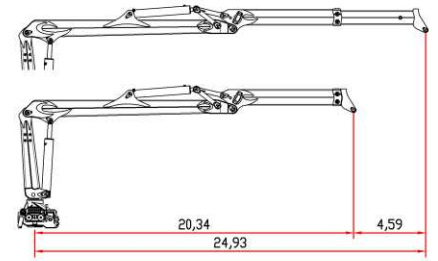
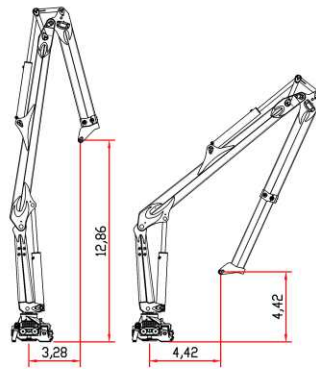
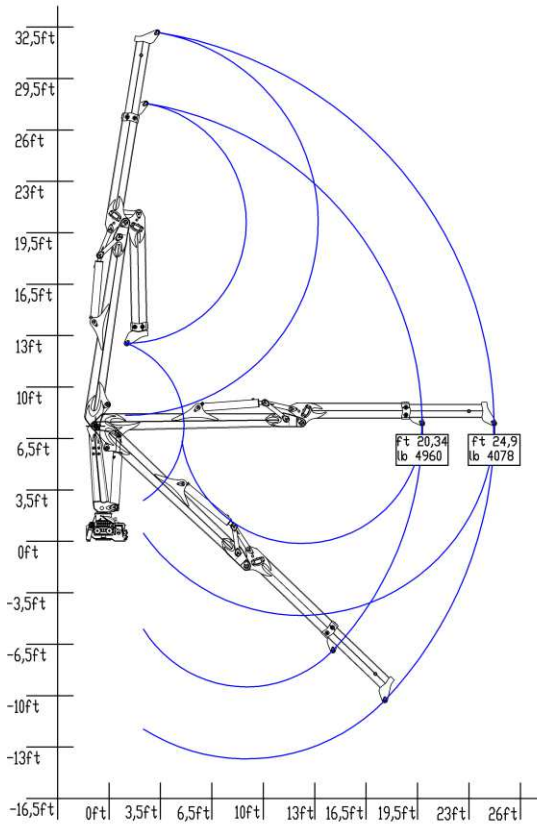
TECHNICAL SPECIFICATIONS

NOT FOLDABLE

- Class of calculation H1B4
 - Lifting moment = 110634 lbfft
 - Hydraulic outreach = 24,93 ft
 - First arm rigid style
 - Jib with one hydraulic extension with integrated fluid transmission system inside jib
 - Proportional flow control
 - Top seat laterally mounted controls with two additional functions at the jib extension
 - Stabilizers with hydraulic rotation 180°, extension and descent
 - Stabilizers ground bilateral controls
 - Ground hoisting control
 - Crane rotation 425° with double rack
 - Construction to Machinery Directives 2006/42/CE+UNI EN 12.999
 - Basic crane weight*: 6106 lb
- * The weight is indicative and referred to the basic crane without options or accessories, protection carters and ancillary equipments (grab, clamp, glass handling device)*

OPTIONS

- Stabilizers with pantograph descent
- Proportional electro-hydraulic flow control with SCANRECO radio control
- Lateral top seat control with joystick and pedals
- Man standing platform with crane operative restricted area
- Glass container handling device
- Oil cooling system
- Top seat access ladder
- Working lights (top seat and jib light)
- Hour counter
- Dry seat foldable shelter



R 150 M, S1



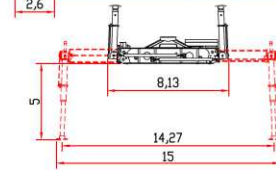
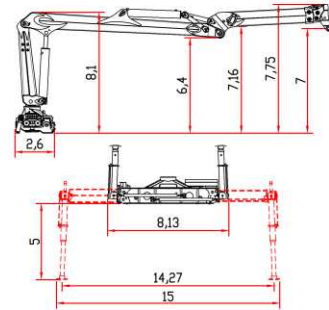
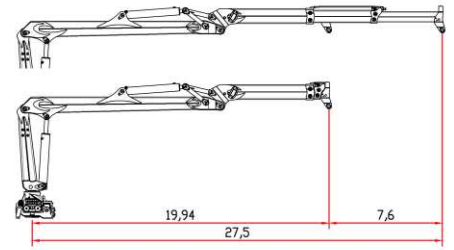
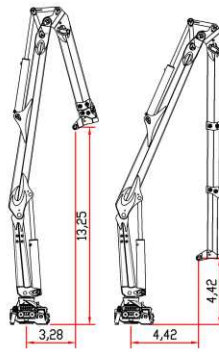
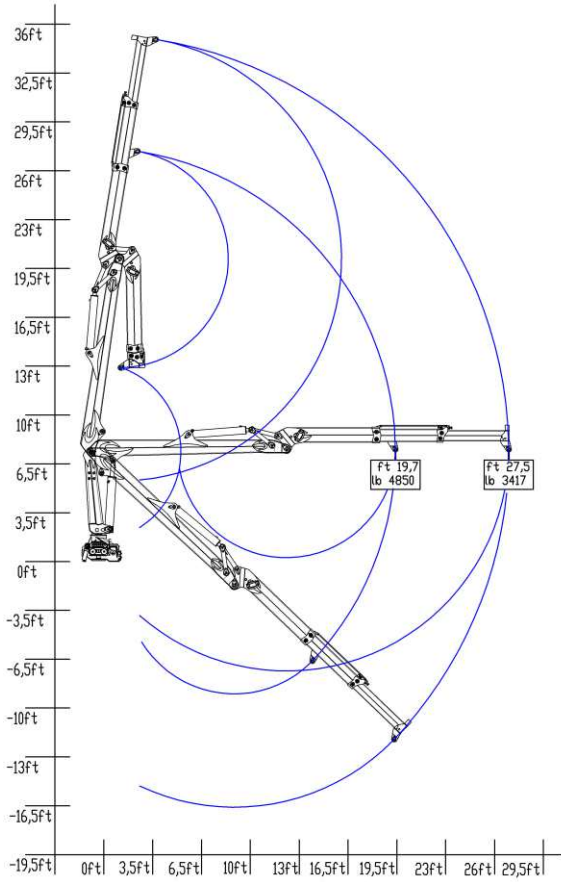
TECHNICAL SPECIFICATIONS

NOT FOLDABLE

- Class of calculation H1B4
 - Lifting moment = 110634 lbfft
 - Hydraulic outreach = 27,55 ft
 - First arm rigid style
 - Jib with two hydraulic extensions with integrated fluid transmission system inside jib
 - Proportional flow control
 - Top seat laterally mounted controls with two additional functions at the jib extension
 - Stabilizers with hydraulic rotation 180°, extension and descent
 - Stabilizers ground bilateral controls
 - Ground hoisting control
 - Crane rotation 425° with double rack
 - Construction to Machinery Directives 2006/42/CE+UNI EN 12.999
 - Basic crane weight*: 6349 lb
- * The weight is indicative and referred to the basic crane without options or accessories, protection carters and ancillary equipments (grab, clamp, glass handling device)*

OPTIONS

- Stabilizers with pantograph descent
- Proportional electro-hydraulic flow control with SCANRECO radio control
- Lateral top seat control with joystick and pedals
- Man standing platform with crane operative restricted area
- Glass container handling device
- Oil cooling system
- Top seat access ladder
- Working lights (top seat and jib light)
- Hour counter
- Dry seat foldable shelter



R 150 MS2



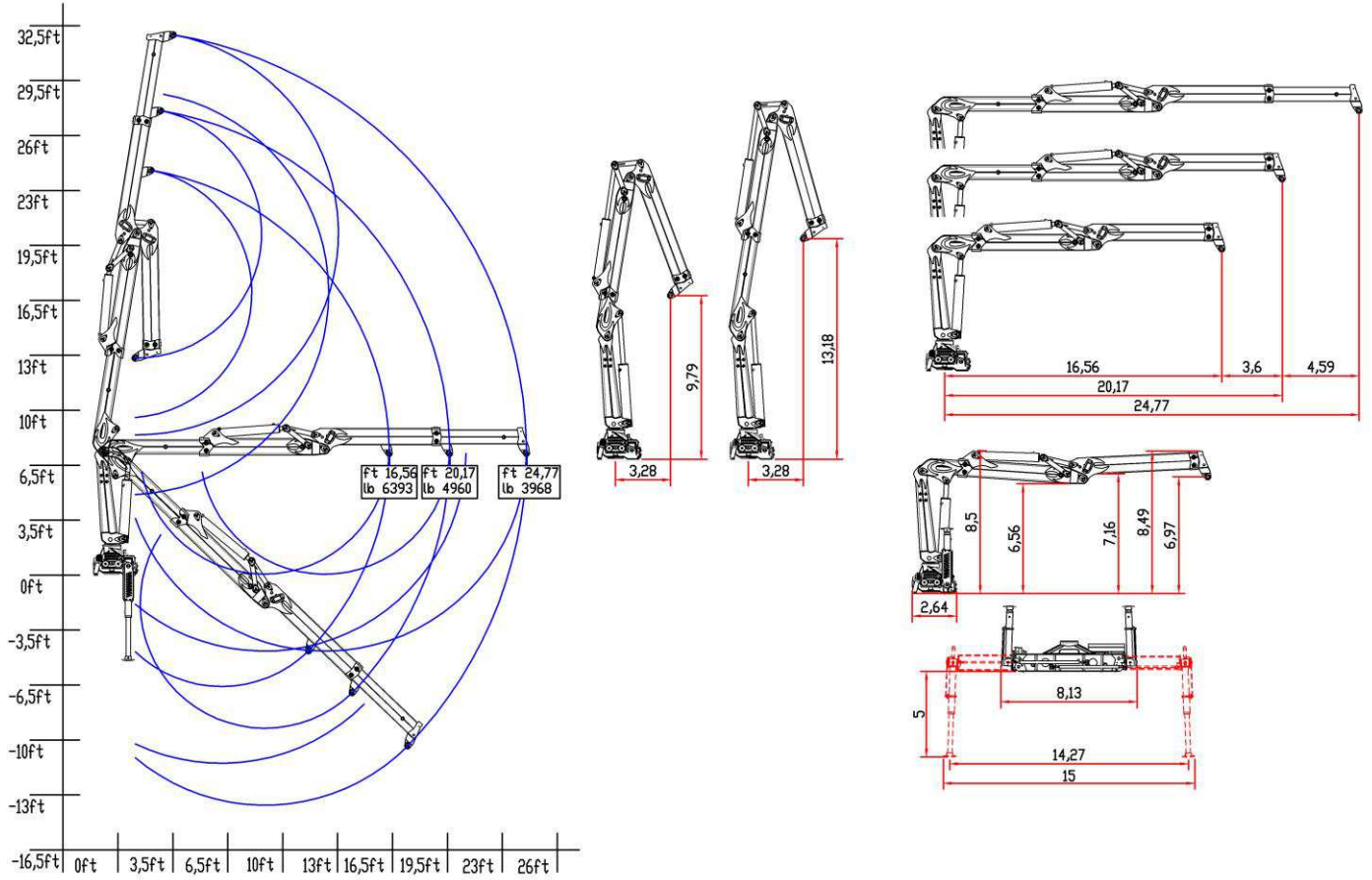
TECHNICAL SPECIFICATIONS

NOT FOLDABLE

- Class of calculation H1B4
 - Lifting moment = 110634 lbfft
 - Hydraulic outreach = 4,77 ft
 - First arm with hydraulic extension
 - Jib with one hydraulic extension with integrated fluid transmission system inside jib
 - Proportional flow control
 - Top seat laterally mounted controls with two additional functions at the jib extension
 - Stabilizers with hydraulic rotation 180°, extension and descent
 - Stabilizers ground bilateral controls
 - Ground hoisting control
 - Crane rotation 425° with double rack
 - Construction to Machinery Directives 2006/42/CE+UNI EN 12.999
 - Basic crane weight*: 6459 lb
- * The weight is indicative and referred to the basic crane without options or accessories, protection carters and ancillary equipments (grab, clamp, glass handling device)*

OPTIONS

- Stabilizers with pantograph descent
- Proportional electro-hydraulic flow control with SCANRECO radio control
- Lateral top seat control with joystick and pedals
- Man standing platform with crane operative restricted area
- Glass container handling device
- Oil cooling system
- Top seat access ladder
- Working lights (top seat and jib light)
- Hour counter
- Dry seat foldable shelter



R 150 S2S



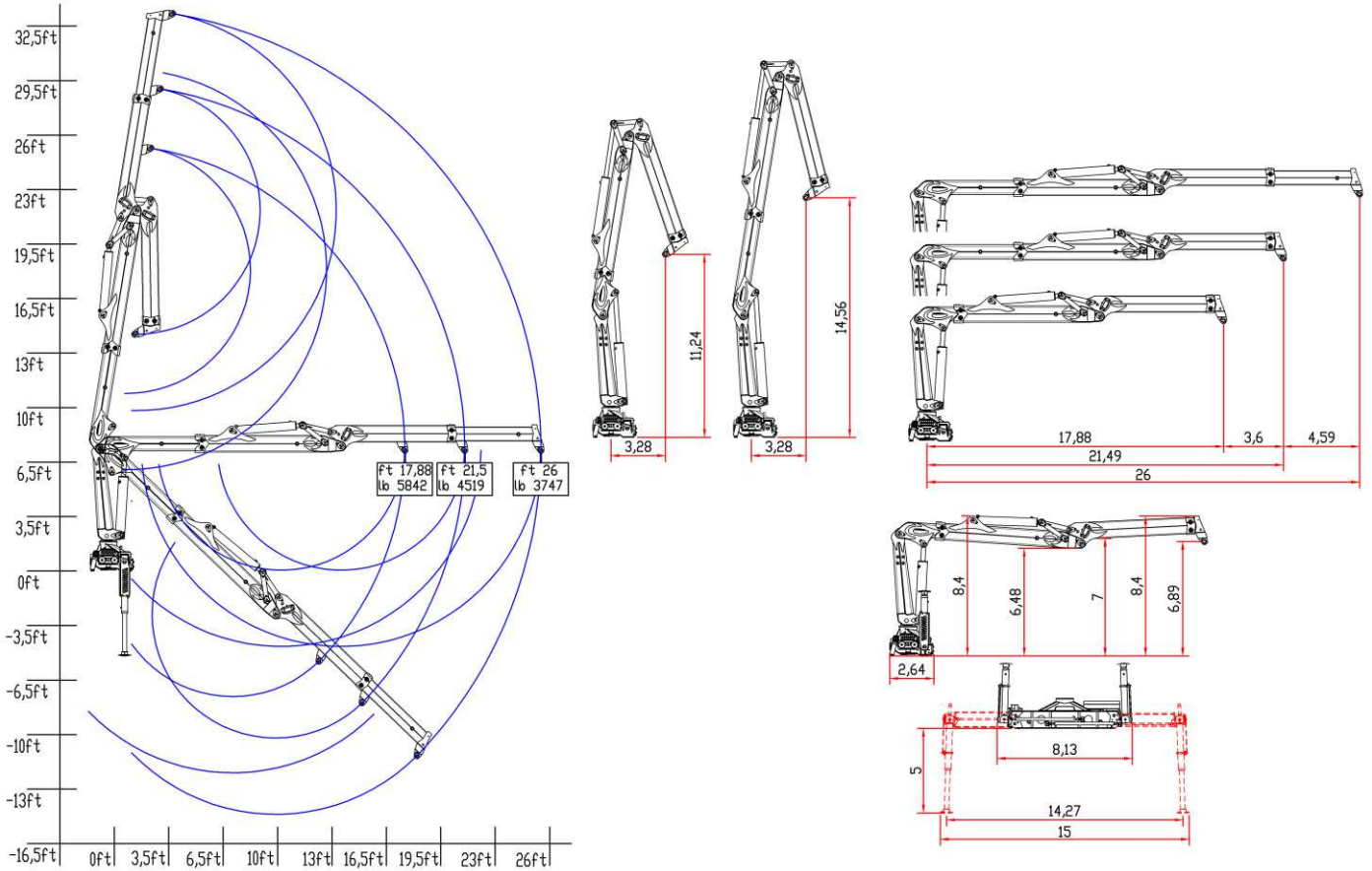
TECHNICAL SPECIFICATIONS

NOT FOLDABLE

- Class of calculation H1B4
 - Lifting moment = 110634 lbfft
 - Hydraulic outreach = 26 ft
 - First arm with hydraulic extension
 - Jib with one hydraulic extension with integrated fluid transmission system inside jib
 - Proportional flow control
 - Top seat laterally mounted controls with two additional functions at the jib extension
 - Stabilizers with hydraulic rotation 180°, extension and descent
 - Stabilizers ground bilateral controls
 - Ground hoisting control
 - Crane rotation 425° with double rack
 - Construction to Machinery Directives 2006/42/CE+UNI EN 12.999
 - Basic crane weight*: 6525 lb
- * The weight is indicative and referred to the basic crane without options or accessories, protection carters and ancillary equipments (grab, clamp, glass handling device)*

OPTIONS

- Stabilizers with pantograph descent
- Proportional electro-hydraulic flow control with SCANRECO radio control
- Lateral top seat control with joystick and pedals
- Man standing platform with crane operative restricted area
- Glass container handling device
- Oil cooling system
- Top seat access ladder
- Working lights (top seat and jib light)
- Hour counter
- Dry seat foldable shelter



R 150 S2i



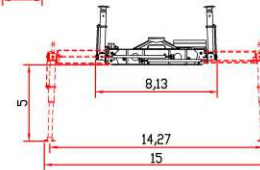
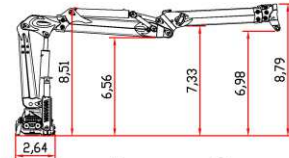
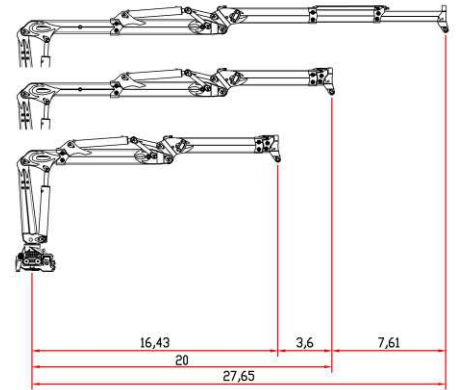
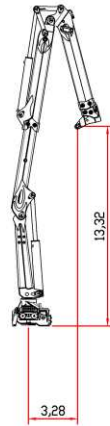
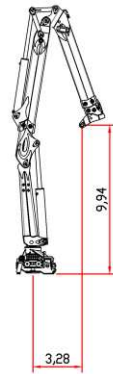
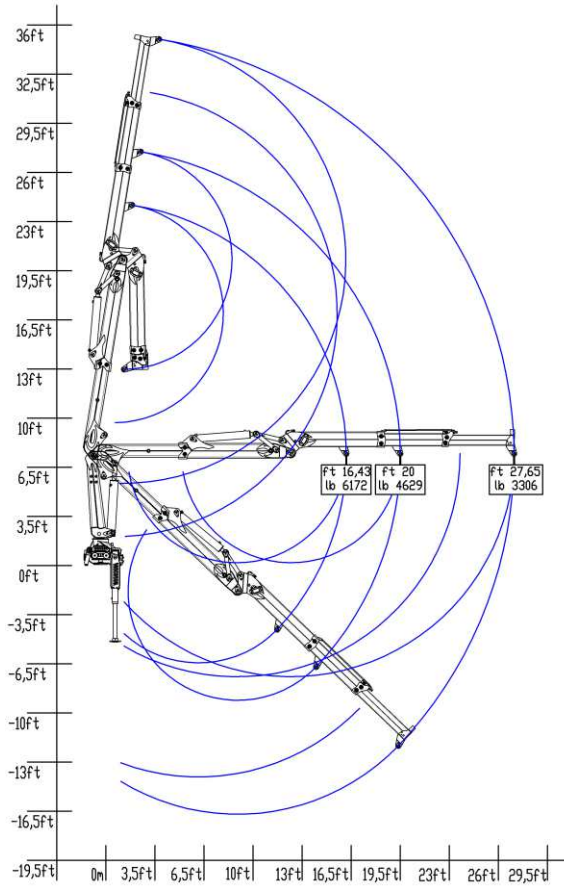
TECHNICAL SPECIFICATIONS

NOT FOLDABLE

- Class of calculation H1B4
 - Lifting moment = 110634 lbfft
 - Hydraulic outreach = 27,65 ft
 - First arm with hydraulic extension
 - Jib with two hydraulic extensions with integrated fluid transmission system inside jib
 - Proportional flow control
 - Top seat laterally mounted controls with two additional functions at the jib extension
 - Stabilizers with hydraulic rotation 180°, extension and descent
 - Stabilizers ground bilateral controls
 - Ground hoisting control
 - Crane rotation 425° with double rack
 - Construction to Machinery Directives 2006/42/CE+UNI EN 12.999
 - Basic crane weight*: 6713 lb
- * *The weight is indicative and referred to the basic crane without options or accessories, protection carters and ancillary equipments (grab, clamp, glass handling device)*

OPTIONS

- Stabilizers with pantograph descent
- Proportional electro-hydraulic flow control with SCANRECO radio control
- Lateral top seat control with joystick and pedals
- Man standing platform with crane operative restricted area
- Glass container handling device
- Oil cooling system
- Top seat access ladder
- Working lights (top seat and jib light)
- Hour counter
- Dry seat foldable shelter



R 150 S3S



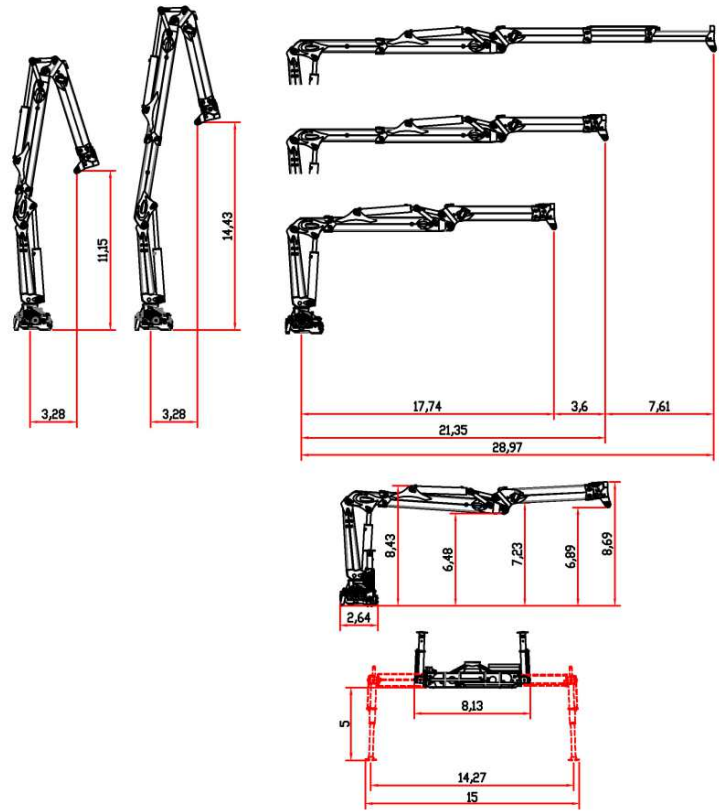
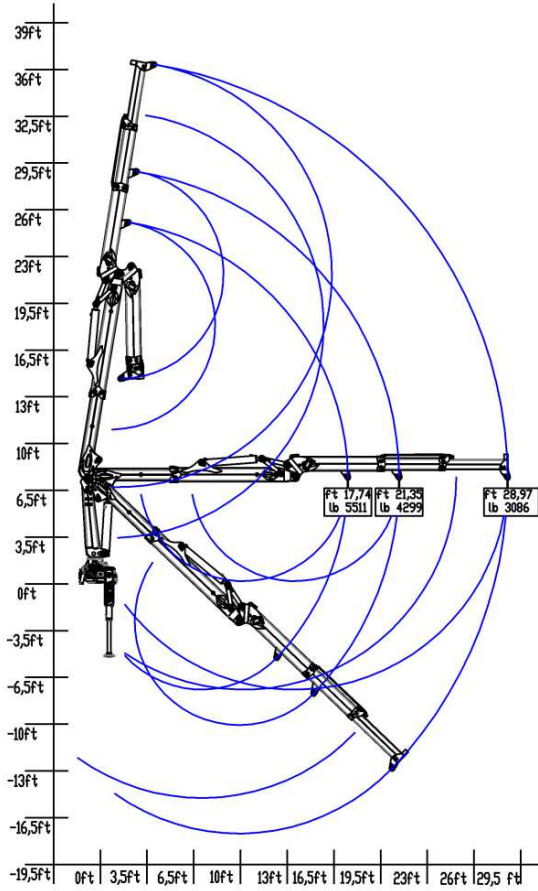
TECHNICAL SPECIFICATIONS

NOT FOLDABLE

- Class of calculation H1B4
 - Lifting moment = 110634 lbfft
 - Hydraulic outreach 28,97 ft
 - First arm with hydraulic extension
 - Jib with two hydraulic extensions with integrated fluid transmission system inside jib
 - Proportional flow control
 - Top seat laterally mounted controls with two additional functions at the jib extension
 - Stabilizers with hydraulic rotation 180°, extension and descent
 - Stabilizers ground bilateral controls
 - Ground hoisting control
 - Crane rotation 425° with double rack
 - Construction to Machinery Directives 2006/42/CE+UNI EN 12.999
 - Basic crane weight*: 6779 lb
- * The weight is indicative and referred to the basic crane without options or accessories, protection carters and ancillary equipments (grab, clamp, glass handling device)*

OPTIONS

- Stabilizers with pantograph descent
- Proportional electro-hydraulic flow control with SCANRECO radio control
- Lateral top seat control with joystick and pedals
- Man standing platform with crane operative restricted area
- Glass container handling device
- Oil cooling system
- Top seat access ladder
- Working lights (top seat and jib light)
- Hour counter
- Dry seat foldable shelter



R 150 S3L



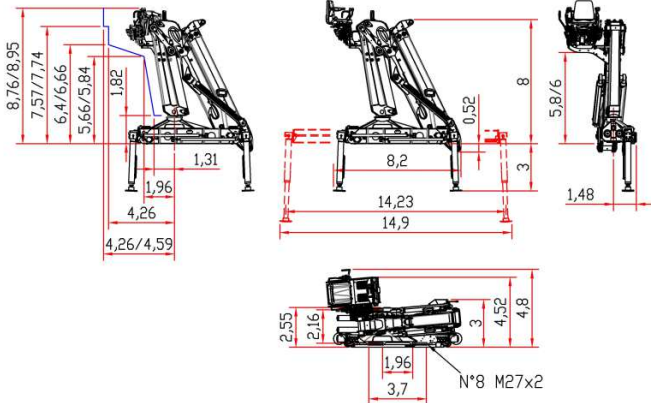
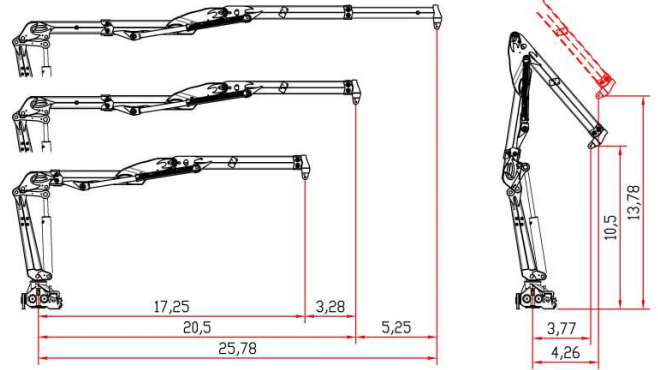
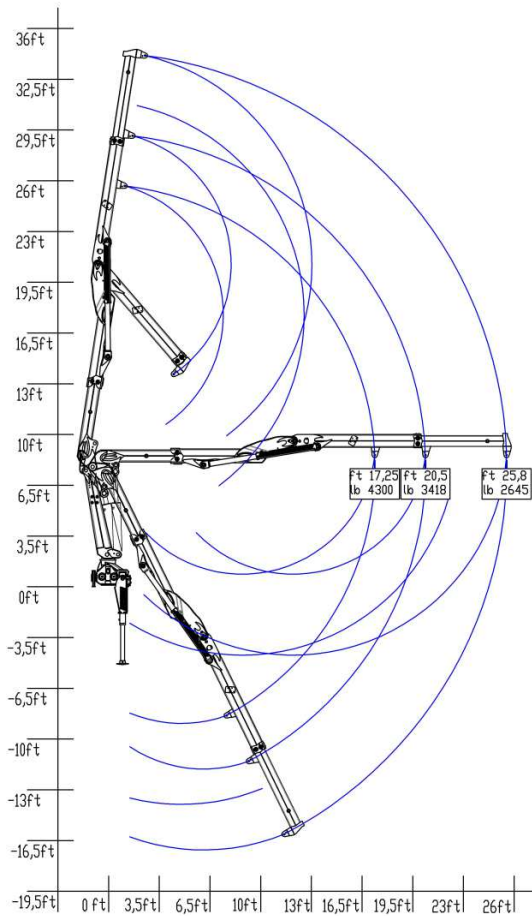
TECHNICAL SPECIFICATIONS

NOT FOLDABLE

- Class of calculation H1B4
 - Lifting moment = 81131 lbfft
 - Hydraulic outreach = 25,78 ft
 - First arm with hydraulic extension
 - Jib with one hydraulic extension with integrated fluid transmission system inside jib
 - Proportional flow control
 - Top seat laterally mounted controls with two additional functions at the jib extension
 - Stabilizers with hydraulic extension and descent
 - Stabilizers ground bilateral controls
 - Ground hoisting control
 - Crane rotation 425° with double rack
 - Construction to Machinery Directives 2006/42/CE+UNI EN 12.999
 - Basic crane weight *: 5680 lb
- * The weight is indicative and referred to the basic crane without options or accessories, protection carters and ancillary equipments (grab, clamp, glass handling device)*

OPTIONS

- Stabilizers with hydraulic rotation 180°, extension and descent
- Stabilizers with pantograph descent
- Proportional electro-hydraulic flow control with SCANRECO radio control
- Lateral top seat control with joystick and pedals
- Man standing platform with crane operative restricted area
- Glass container handling device
- Oil cooling system
- Top seat access ladder
- Working lights (top seat and jib light)
- Hour counter
- Dry seat foldable shelter



W 110 S2



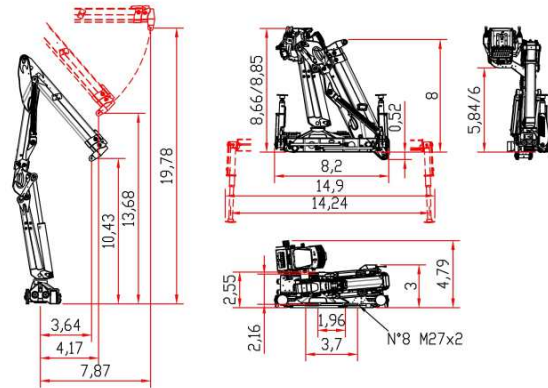
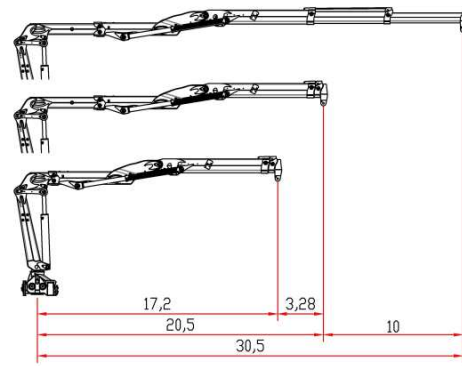
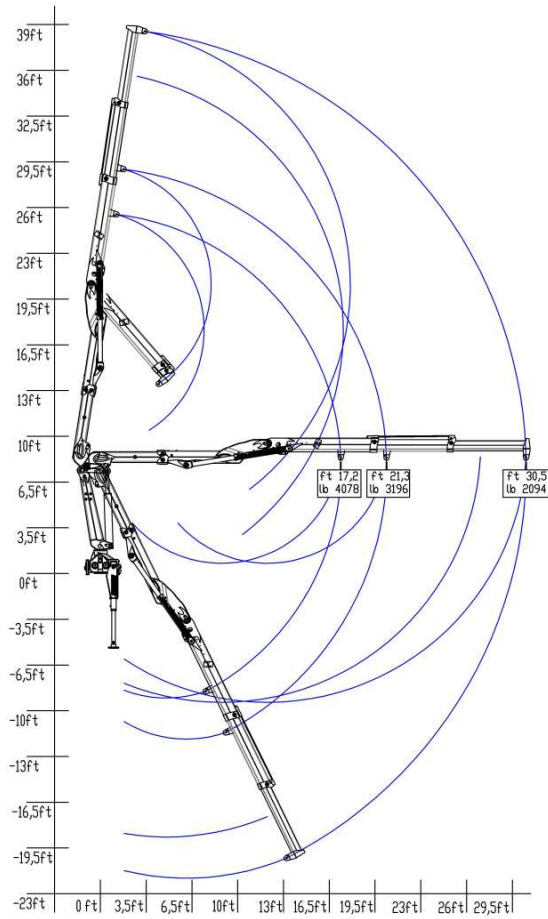
TECHNICAL SPECIFICATIONS

NOT FOLDABLE

- Class of calculation H1B4
 - Lifting moment = 81131 lbfft
 - Hydraulic outreach = 30,5 ft
 - First arm with hydraulic extension
 - Jib with two hydraulic extensions with integrated fluid transmission system inside jib
 - Proportional flow control
 - Top seat laterally mounted controls with two additional functions at the jib extension
 - Stabilizers with hydraulic extension and descent
 - Stabilizers ground bilateral controls
 - Ground hoisting control
 - Crane rotation 425° with double rack
 - Construction to Machinery Directives 2006/42/CE+UNI EN 12.999
 - Basic crane weight *: 5880 lb
- * The weight is indicative and referred to the basic crane without options or accessories, protection carters and ancillary equipments (grab, clamp, glass handling device)*

OPTIONS

- Stabilizers with hydraulic rotation 180°, extension and descent
- Stabilizers with pantograph descent
- Proportional electro-hydraulic flow control with SCANRECO radio control
- Lateral top seat control with joystick and pedals
- Man standing platform with crane operative restricted area
- Glass container handling device
- Oil cooling system
- Top seat access ladder
- Working lights (top seat and jib light)
- Hour counter
- Dry seat foldable shelter



W 110 S3



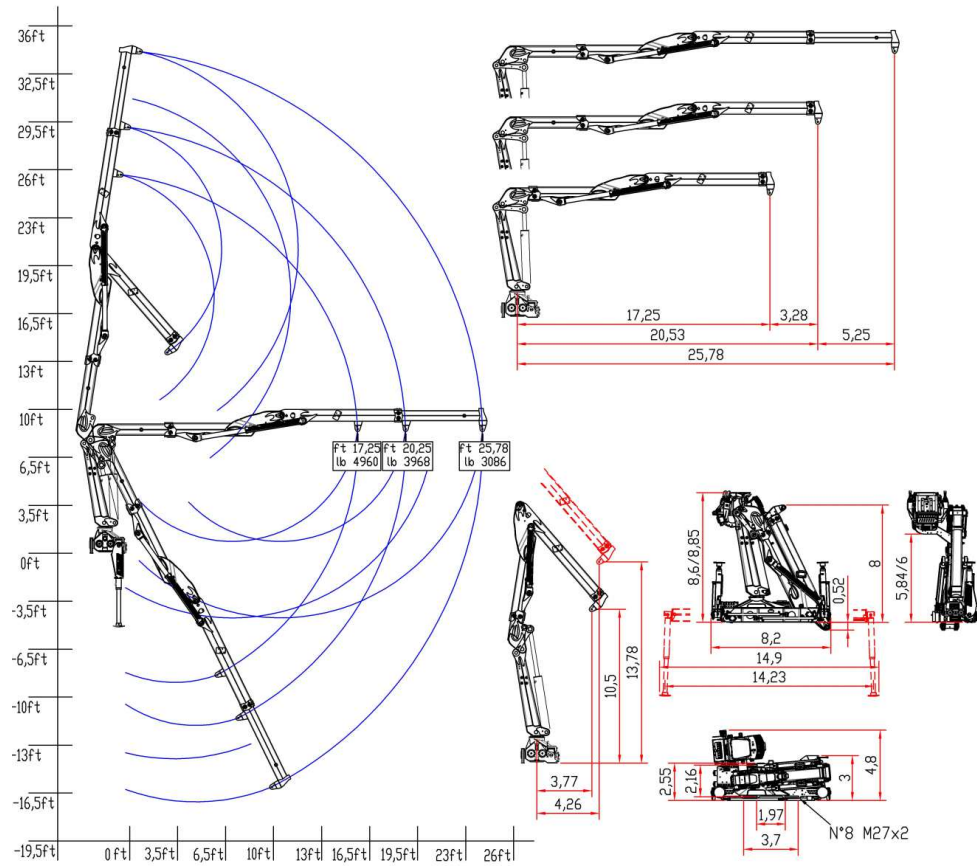
TECHNICAL SPECIFICATIONS

NOT FOLDABLE

- Class of calculation H1B4
 - Lifting moment = 95883 lbfft
 - Hydraulic outreach = 25,78 ft
 - First arm with hydraulic extension
 - Jib with one hydraulic extension with integrated fluid transmission system inside jib
 - Proportional flow control
 - Top seat laterally mounted controls with two additional functions at the jib extension
 - Stabilizers with hydraulic rotation 180°, extension and descent
 - Stabilizers ground bilateral controls
 - Ground hoisting control
 - Crane rotation 425° with double rack
 - Construction to Machinery Directives 2006/42/CE+UNI EN 12.999
 - Basic crane weight*: 5800 lb
- * The weight is indicative and referred to the basic crane without options or accessories, protection carters and ancillary equipments (grab, clamp, glass handling device)*

OPTIONS

- Stabilizers with pantograph descent
- Proportional electro-hydraulic flow control with SCANRECO radio control
- Lateral top seat control with joystick and pedals
- Man standing platform with crane operative restricted area
- Glass container handling device
- Oil cooling system
- Top seat access ladder
- Working lights (top seat and jib light)
- Hour counter
- Dry seat foldable shelter



W 130 S2



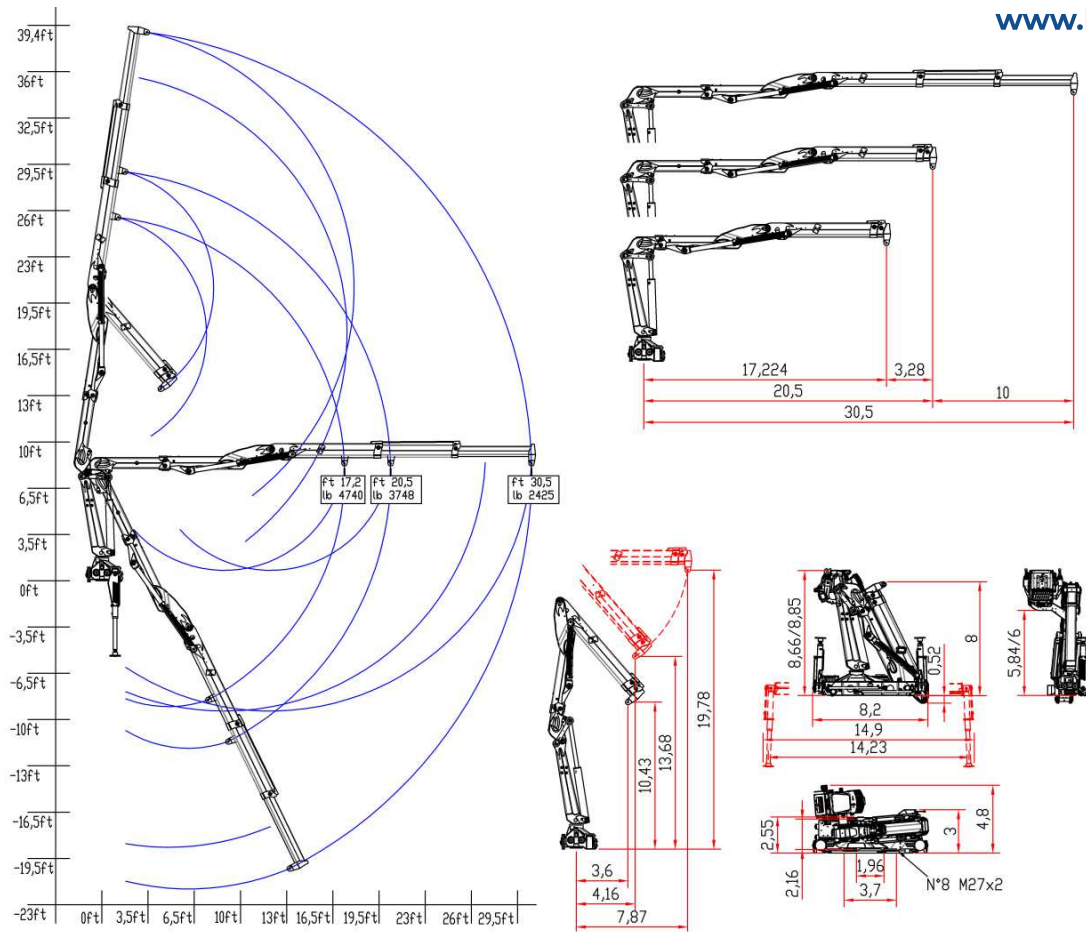
TECHNICAL SPECIFICATIONS

NOT FOLDABLE

- Class of calculation H1B4
- Lifting moment = 95883 lbfft
- Hydraulic outreach = 30,5 ft
- First arm with hydraulic extension
- Jib with two hydraulic extensions with integrated fluid transmission system inside jib
- Proportional flow control
- Top seat laterally mounted controls with two additional functions at the jib extension
- Stabilizers with hydraulic rotation 180°, extension and descent
- Stabilizers ground bilateral controls
- Ground hoisting control
- Crane rotation 425° with double rack
- Construction to Machinery Directives 2006/42/CE+UNI EN 12.999
- Basic crane weight*: 5996 lb
- *The weight is indicative and referred to the basic crane without options or accessories, equipments (grab, clamp, glass handling device) protection carters and ancillary*

OPTIONS

- Stabilizers with pantograph descent
- Proportional electro-hydraulic flow control with SCANRECO radio control
- Lateral top seat control with joystick and pedals
- Man standing platform with crane operative restricted area
- Glass container handling device
- Oil cooling system
- Top seat access ladder
- Working lights (top seat and jib light)
- Hour counter
- Dry seat foldable shelter



W 130 S3



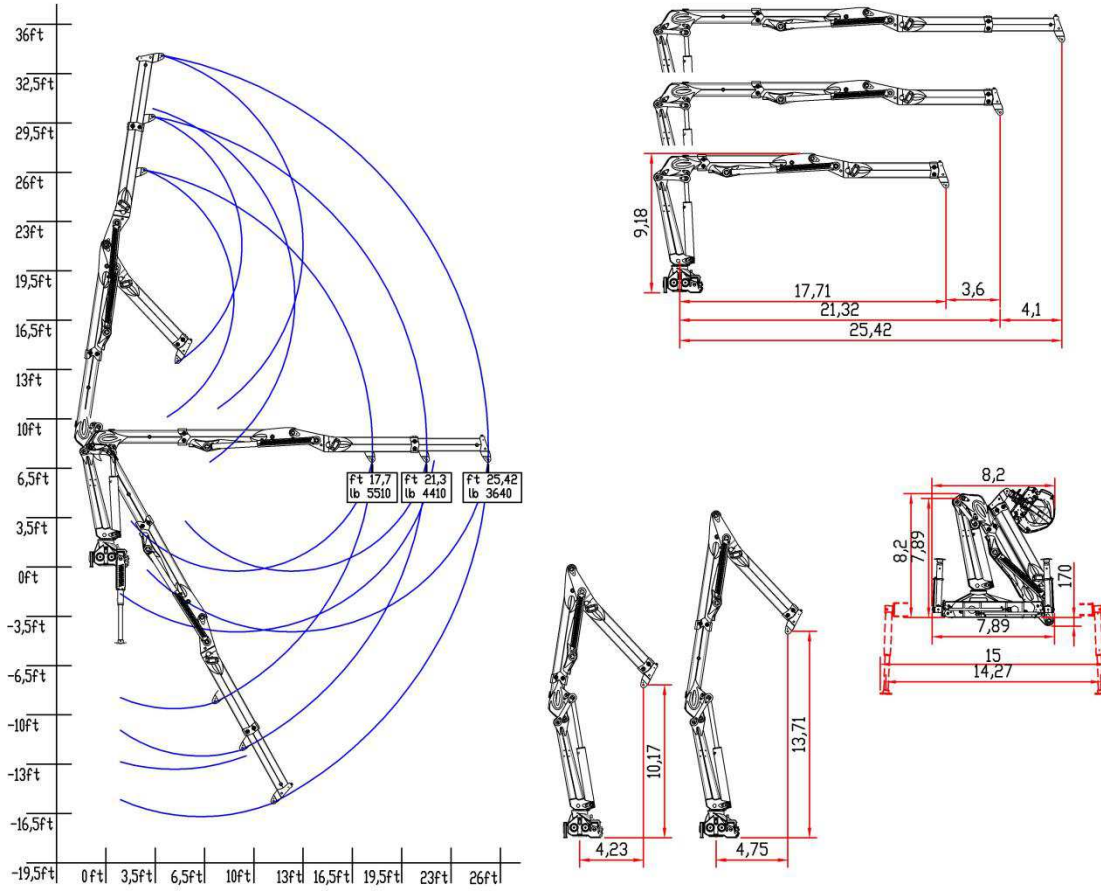
TECHNICAL SPECIFICATIONS

NOT FOLDABLE

- Class of calculation H1B4
 - Lifting moment = 110634 lbfft
 - Hydraulic outreach = 25,42 ft
 - First arm with hydraulic extension
 - Jib with one hydraulic extension with integrated fluid transmission system inside jib
 - Proportional flow control
 - Top seat laterally mounted controls with two additional functions at the jib extension
 - Stabilizers with hydraulic rotation 180°, extension and descent
 - Stabilizers ground bilateral controls
 - Ground hoisting control
 - Crane rotation 425° with double rack
 - Construction to Machinery Directives 2006/42/CE+UNI EN 12.999
 - Basic crane weight*: 6900 lb
- * The weight is indicative and referred to the basic crane without options or accessories, protection carters and ancillary equipments (grab, clamp, glass handling device)*

OPTIONS

- Stabilizers with pantograph descent
- Proportional electro-hydraulic flow control with SCANRECO radio control
- Lateral top seat control with joystick and pedals
- Man standing platform with crane operative restricted area
- Glass container handling device
- Oil cooling system
- Top seat access ladder
- Working lights (top seat and jib light)
- Hour counter
- Dry seat foldable shelter



W 150 S2



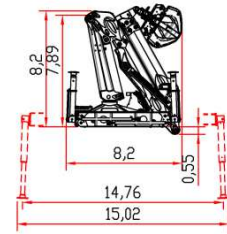
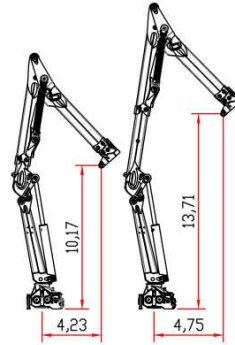
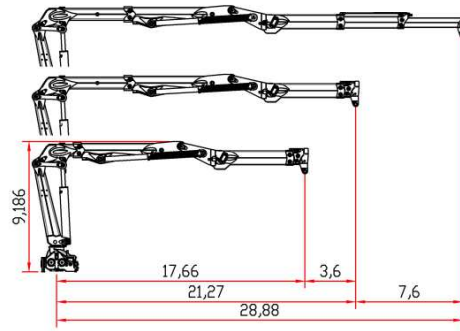
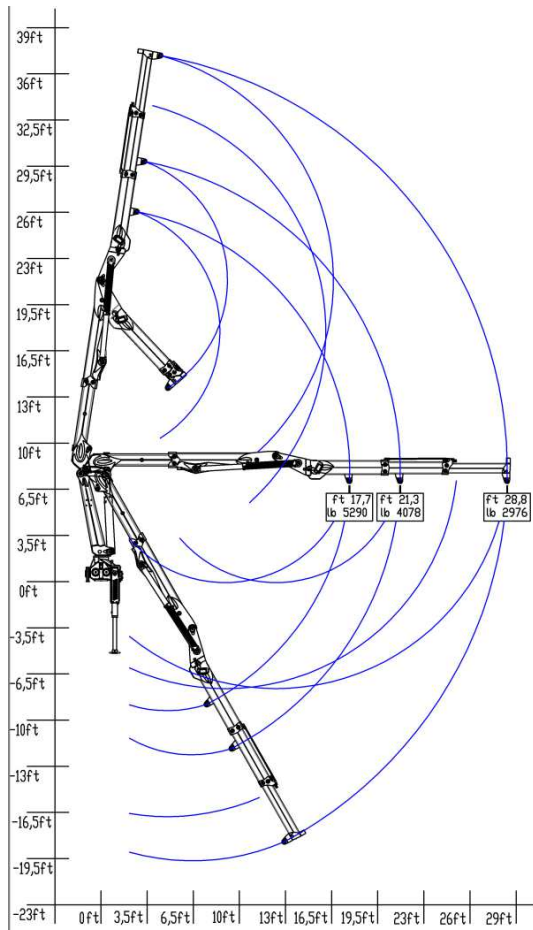
TECHNICAL SPECIFICATIONS

NOT FOLDABLE

- Class of calculation H1B4
 - Lifting moment = 110634 lbfft
 - Hydraulic outreach = 28,87 ft
 - First arm with hydraulic extension
 - Jib with two hydraulic extensions with integrated fluid transmission system inside jib
 - Proportional flow control
 - Top seat laterally mounted controls with two additional functions at the jib extension
 - Stabilizers with hydraulic rotation 180°, extension and descent
 - Stabilizers ground bilateral controls
 - Ground hoisting control
 - Crane rotation 425° with double rack
 - Construction to Machinery Directives 2006/42/CE+UNI EN 12.999
 - Basic crane weight*: 7142 lb
- * *The weight is indicative and referred to the basic crane without options or accessories, protection carters and ancillary equipments (grab, clamp, glass handling device)*

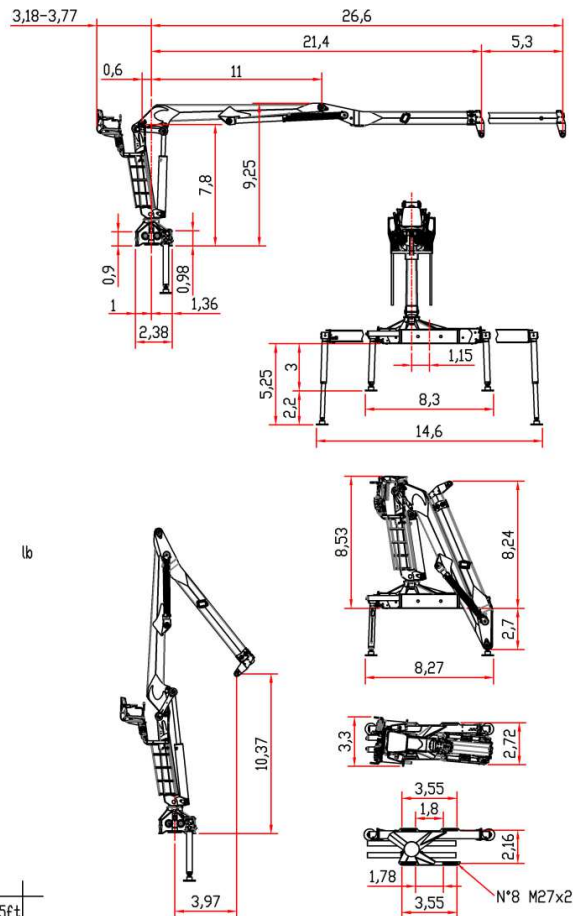
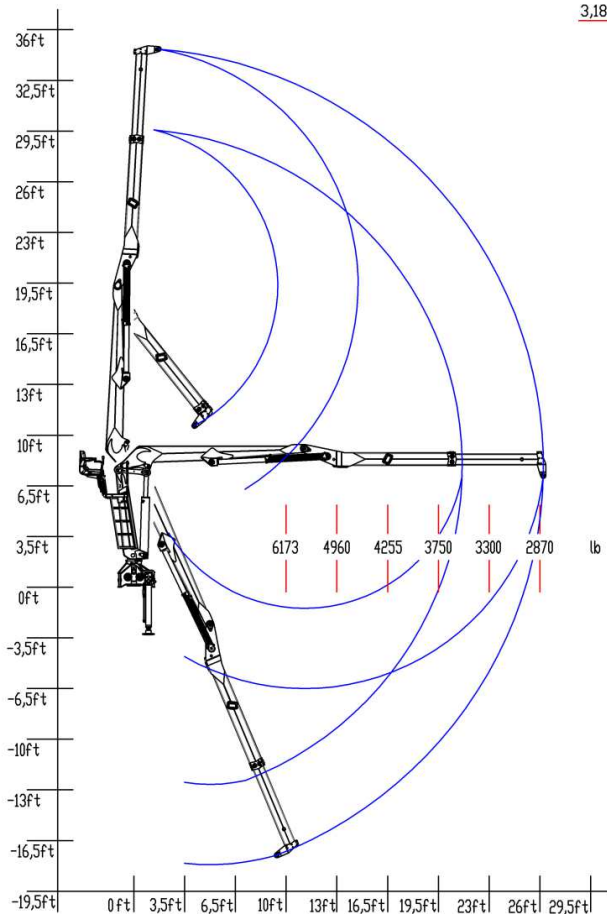
OPTIONS

- Stabilizers with pantograph descent
- Proportional electro-hydraulic flow control with SCANRECO radio control
- Lateral top seat control with joystick and pedals
- Man standing platform with crane operative restricted area
- Glass container handling device
- Oil cooling system
- Top seat access ladder
- Working lights (top seat and jib light)
- Hour counter
- Dry seat foldable shelter



W 150 S3





WT 110 M,S1

TECHNICAL SPECIFICATIONS

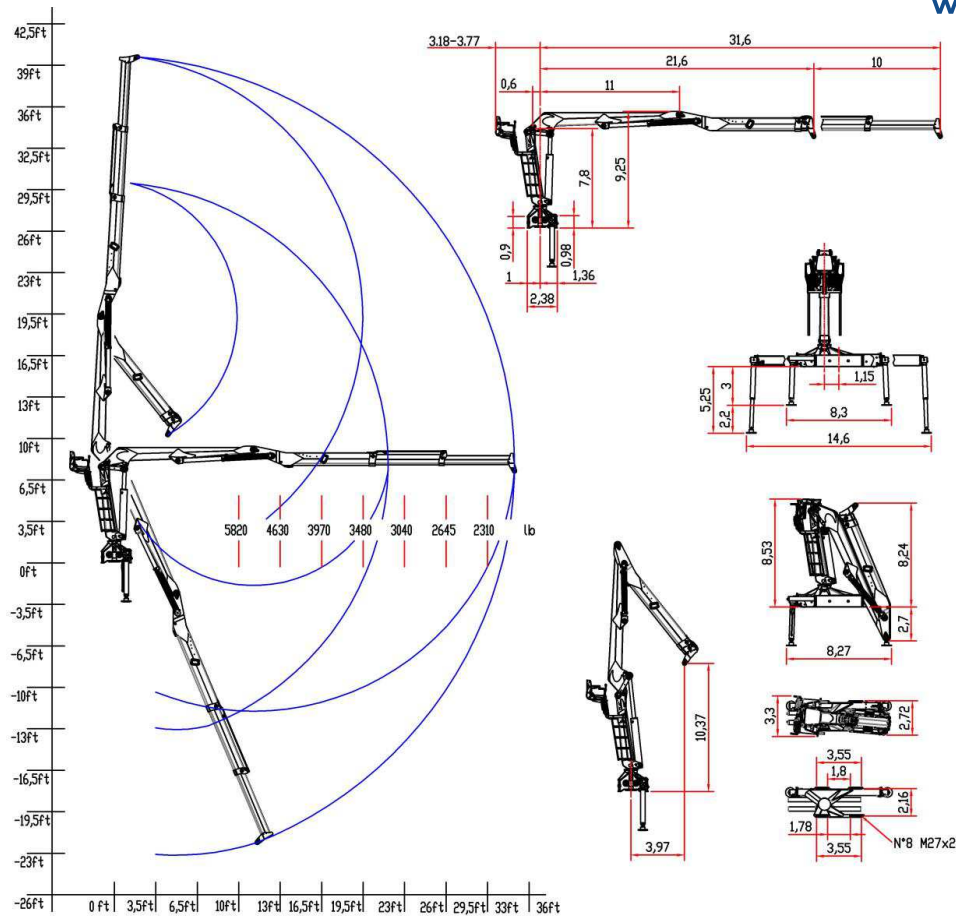
NOT FOLDABLE

- Class of calculation H1B4
- Lifting moment gross = 98800 lbfft
- Lifting moment net = 76700 lbfft
- Hydraulic outreach = 26,6 ft
- First arm rigid type
- Jib with one hydraulic extension with integrated fluid transmission system inside jib
- Proportional flow control
- Top seat laterally mounted controls with two additional functions at the jib extension
- Stabilizers with hydraulic extension and descent
- Stabilizers ground bilateral controls
- Ground hoisting control
- Crane rotation 425° with double rack
- Construction to Machinery Directives 2006/42/CE+UNI EN 12.999
- Basic crane weight*: 4740 lb

* The weight is indicative and referred to the basic crane without options or accessories, protection carters and ancillary equipments (grab, clamp, glass handling device)

OPTIONS

- Stabilizers with hydraulic rotation 180°, extension and descent
- Stabilizers with pantograph descent
- Proportional electro-hydraulic flow control with SCANRECO radio control
- Lateral top seat control with joystick and pedals
- Man standing platform with crane operative restricted area
- Glass container handling device
- Oil cooling system
- Top seat access ladder
- Working lights (top seat and jib light)
- Hour counter
- Dry seat foldable shelter



bob

WT 110 M.S2

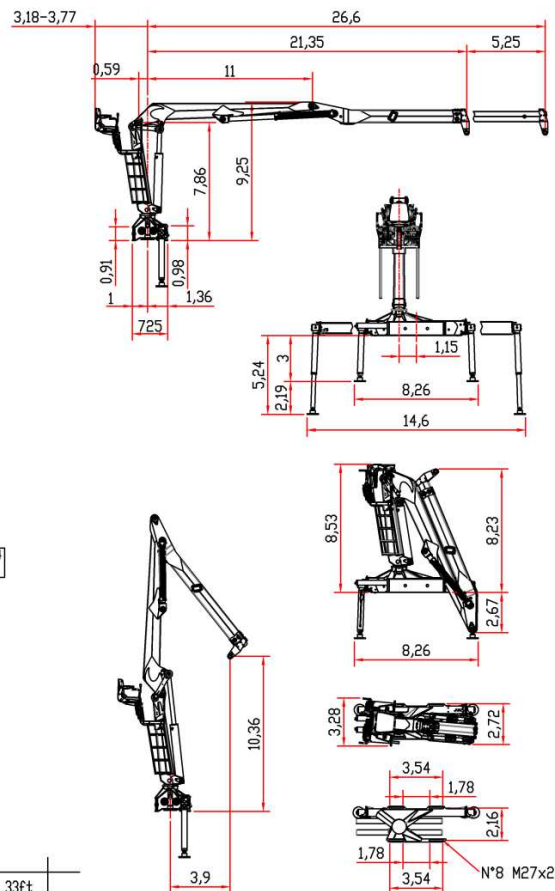
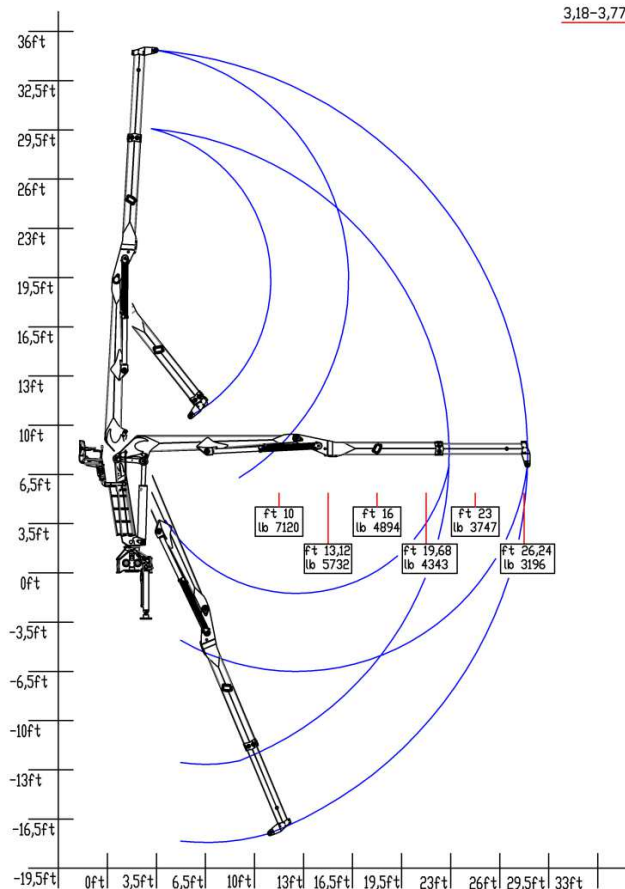
TECHNICAL SPECIFICATIONS

NOT FOLDABLE

- Class of calculation H1B4
 - Lifting moment gross = 98800 lbfft
 - Lifting moment net = 69330 lbfft
 - Hydraulic outreach = 31,6 ft
 - First arm rigid type
 - Jib with two hydraulic extensions with integrated fluid transmission system inside jib
 - Proportional flow control
 - Top seat laterally mounted controls with two additional functions at the jib extension
 - Stabilizers with hydraulic extension and descent
 - Stabilizers ground bilateral controls
 - Ground hoisting control
 - Crane rotation 425° with double rack
 - Construction to Machinery Directives 2006/42/CE+UNI EN 12.999
 - Basic crane weight *: 5070 lb
- * The weight is indicative and referred to the basic crane without options or accessories, protection carters and ancillary equipments (grab, clamp, glass handling device)

OPTIONS

- Stabilizers with hydraulic rotation 180°, extension and descent
- Stabilizers with pantograph descent
- Proportional electro-hydraulic flow control with SCANRECO radio control
- Lateral top seat control with joystick and pedals
- Man standing platform with crane operative restricted area
- Glass container handling device
- Oil cooling system
- Top seat access ladder
- Working lights (top seat and jib light)
- Hour counter
- Dry seat foldable shelter



WT 130 M,S1

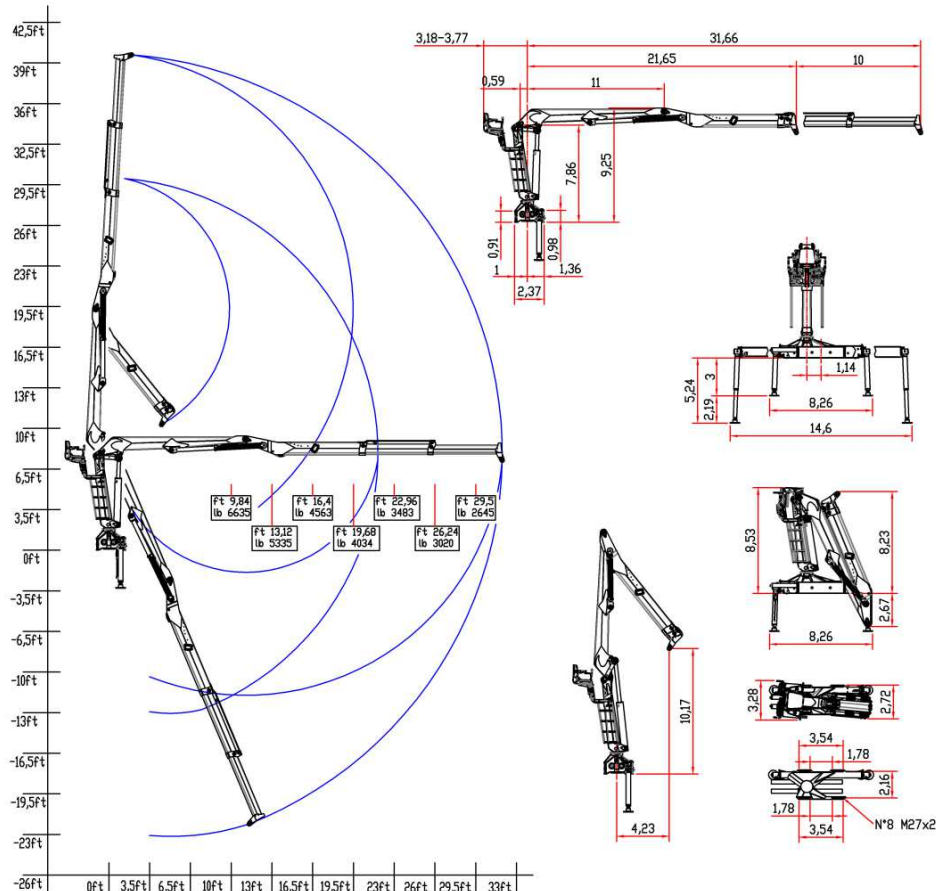
TECHNICAL SPECIFICATIONS

NOT FOLDABLE

- Class of calculation H1B4
 - Lifting moment gross = 110634 lbfft
 - Lifting moment net = 89245 lbfft
 - Hydraulic outreach = 26,6 ft
 - First arm rigid type
 - Jib with one hydraulic extension with integrated fluid transmission system inside jib
 - Proportional flow control
 - Top seat laterally mounted controls with two additional functions at the jib extension
 - Stabilizers with hydraulic rotation 180°, extension and descent
 - Stabilizers ground bilateral controls
 - Ground hoisting control
 - Crane rotation 425° with double rack
 - Construction to Machinery Directives 2006/42/CE+UNI EN 12.999
 - Basic crane weight *: 4850 lb
- * The weight is indicative and referred to the basic crane without options or accessories, protection carters and ancillary equipments (grab, clamp, glass handling device)

OPTIONS

- Stabilizers with pantograph descent
- Proportional electro-hydraulic flow control with SCANRECO radio control
- Lateral top seat control with joystick and pedals
- Man standing platform with crane operative restricted area
- Glass container handling device
- Oil cooling system
- Top seat access ladder
- Working lights (top seat and jib light)
- Hour counter
- Dry seat foldable shelter



WT 130 M.S2

TECHNICAL SPECIFICATIONS

NOT FOLDABLE

- Class of calculation H1B4
 - Lifting moment gross = 88507 lbfft
 - Lifting moment net = 81131 lbfft
 - Hydraulic outreach = 31,66 ft
 - First arm rigid type
 - Jib with two hydraulic extensions with integrated fluid transmission system inside jib
 - Proportional flow control
 - Top seat laterally mounted controls with two additional functions at the jib extension
 - Stabilizers with hydraulic rotation 180°, extension and descent
 - Stabilizers ground bilateral controls
 - Ground hoisting control
 - Crane rotation 425° with double rack
 - Construction to Machinery Directives 2006/42/CE+UNI EN 12.999
 - Basic crane weight *: 5180 lb
- * The weight is indicative and referred to the basic crane without options or accessories, protection carters and ancillary equipments (grab, clamp, glass handling device)

OPTIONS

- Stabilizers with pantograph descent
- Proportional electro-hydraulic flow control with SCANRECO radio control
- Lateral top seat control with joystick and pedals
- Man standing platform with crane operative restricted area
- Glass container handling device
- Oil cooling system
- Top seat access ladder
- Working lights (top seat and jib light)
- Hour counter
- Dry seat foldable shelter



www.bobspa.com



bob unilift



Scan me

call us for information at
Ph. +1 276 252 9105



TIMBERLAND TRUCK SALES CORP.

218 Virgil H. Goode Highway
Bassett VA 24055 - Ph. +1 276 6294400
www.timberlandtrucks.com

BOB SISTEMI IDRAULICI SPA

Reg. Oltre Rea, 32 - 12060 Monchiero (CN) - Italy
Phone +39 0173 780 002 - Fax +39 0173 780 700
Email: info@bobspa.com